A large, multi-story brick building with a prominent white vertical stripe, situated along a canal. A narrowboat is moored in the foreground, and the building's reflection is visible in the water. The sky is blue with some clouds.

PCM
£1,150 PCM
Chandley Wharf
Warwick, CV34 5AT

PROPERTY SUMMARY

A stunning, Canal side, two double bedroom, ground floor apartment in the popular Chandley Wharf development in Warwick. Comprising, Large, lounge/diner, modern fitted kitchen, two double bedrooms the master having an Ensuite and a further bathroom. Allocated parking and offered part furnished and available 10th October 2025

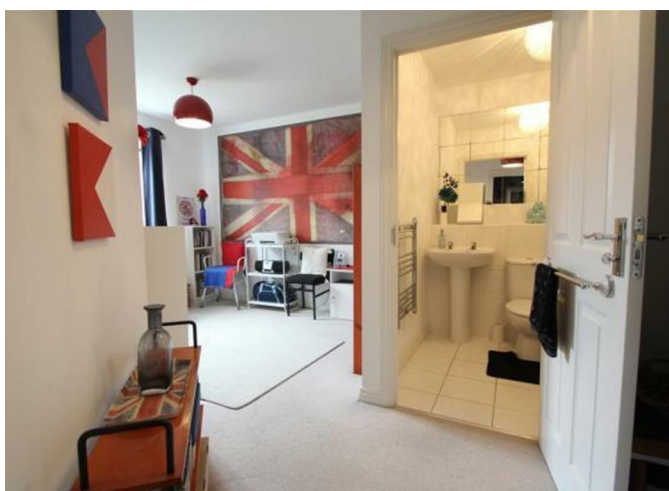
2



2



1



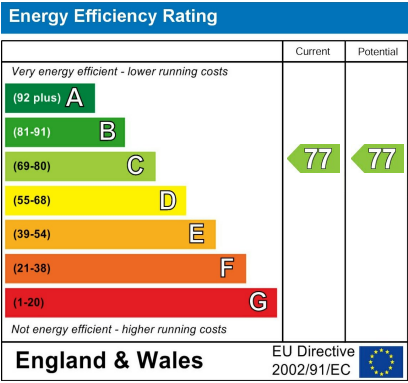
2

2

1







Agents Note: Whilst every care has been taken to prepare these particulars, they are for guidance purposes only. All measurements are approximate and are for general guidance purposes only and whilst every care has been taken to ensure their accuracy, they should not be relied upon and potential buyers/tenants are advised to recheck the measurements



OFFICE ADDRESS
8a Regent Street
Leamington Spa
Warwickshire
CV32 5HO

OFFICE DETAILS
01926 354 400
leamington@handlesproperty.co.uk