

PCM
£1,550 PCM
Clarence Mansions,
Leamington Spa, CV32 5LD

PROPERTY SUMMARY

A Distinguished Town Centre Apartment within a Landmark Building

Forming part of an elegant conversion of a beautiful Grade II* Listed building, this stunning apartment occupies a prime position in the very heart of Leamington Spa town centre.

Set across a single level, the property offers well-proportioned and immaculately presented accommodation, finished to an exceptional standard while retaining a wealth of period character features throughout.

Residents benefit from a secure communal entrance with entry system, communal lift access, and an allocated parking space—a rare and valuable feature for such a central location. The apartment is ideally placed for all town centre amenities, with Leamington

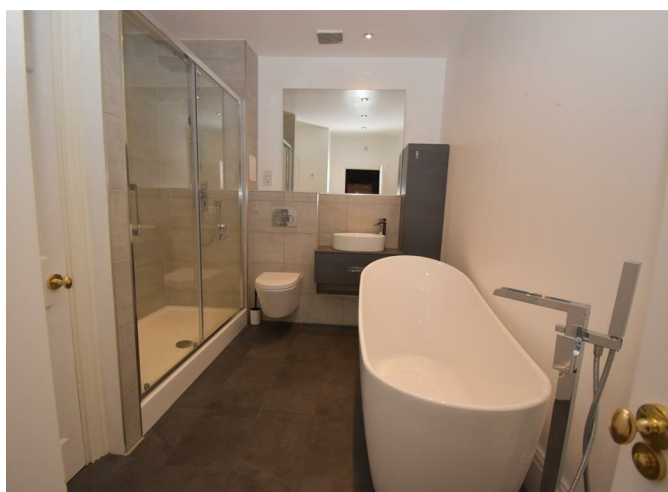
2

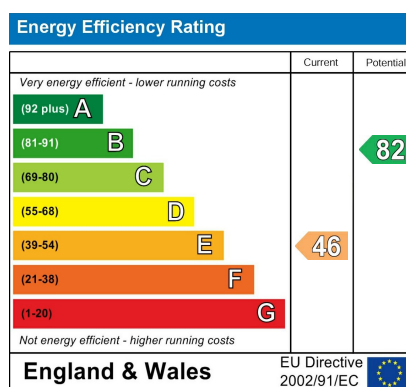


1



1





Agents Note: Whilst every care has been taken to prepare these particulars, they are for guidance purposes only. All measurements are approximate and are for general guidance purposes only and whilst every care has been taken to ensure their accuracy, they should not be relied upon and potential buyers/tenants are advised to recheck the measurements



OFFICE ADDRESS
8a Regent Street
Leamington Spa
Warwickshire
CV32 5HO

OFFICE DETAILS
01926 354 400
leamington@handlesproperty.co.uk