

PCM
£1,950 PCM
Murcott Road East
Leamington Spa, CV31 2JJ

PROPERTY SUMMARY

A Beautifully finished 4 bedroom extended semi detached house in a popular residential location. The property has been done to a fantastic standard throughout and is an ideal family home. Downstairs comprises a large lounge and dinning area, good size kitchen, utility room and study. Upstairs there are 4 bedrooms, 2 with ensuites and also a further family bathroom. Furthermore the property also benefits from a double garage and large back garden. Hot tub not included Unfurnished and Available end of August 2025

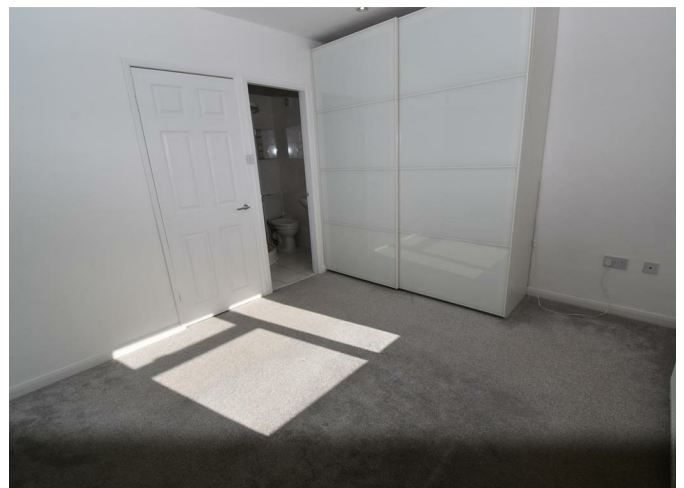
4



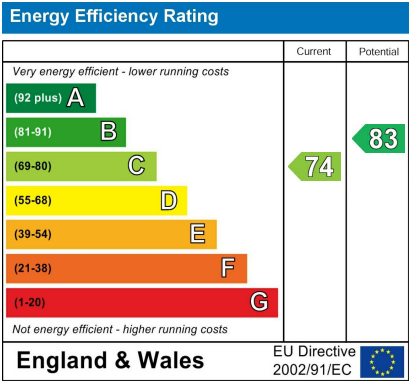
3



1







Agents Note: Whilst every care has been taken to prepare these particulars, they are for guidance purposes only. All measurements are approximate and are for general guidance purposes only and whilst every care has been taken to ensure their accuracy, they should not be relied upon and potential buyers/tenants are advised to recheck the measurements



OFFICE ADDRESS
 8a Regent Street
 Leamington Spa
 Warwickshire
 CV32 5HO

OFFICE DETAILS
 01926 354 400
leamington@handlesproperty.co.uk