



PCM

£2,100 PCM  
Golf Lane

Leamington Spa, CV31 2PU



## PROPERTY SUMMARY

An exceptional, four bedroom detached house in a popular area, in Leamington Spa. The property boasts many features and has been finished to the highest standard throughout. Briefly comprising, spacious lounge, separate dining room, leading out to the enclosed rear garden. A modern fitted kitchen with appliances, a separate utility room with cloakroom. Upstairs there are four bedrooms, three good size doubles, and a third single room or study. Both the master and the second has an Ensuite. There is also a family bathroom. There plenty of parking to the front. Unfurnished and available late October.

4



2

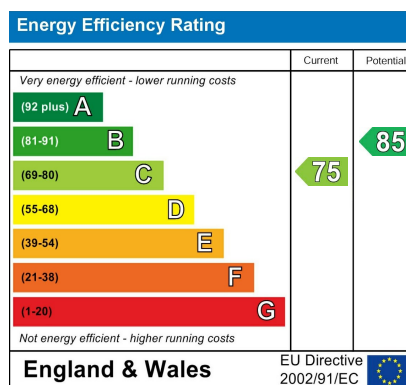
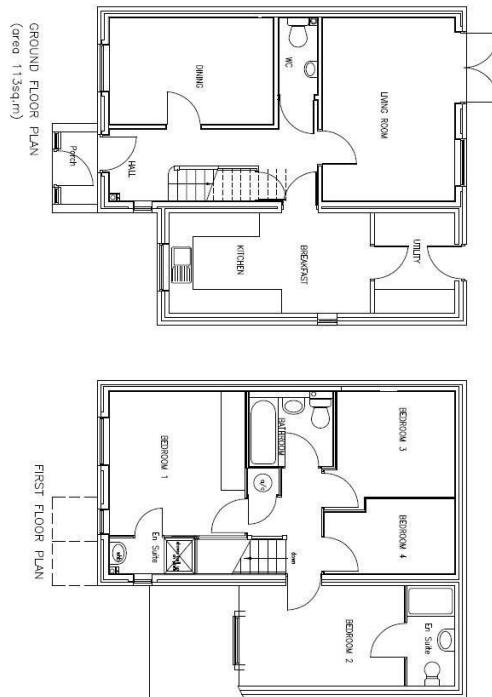


2









Agents Note: Whilst every care has been taken to prepare these particulars, they are for guidance purposes only. All measurements are approximate and are for general guidance purposes only and whilst every care has been taken to ensure their accuracy, they should not be relied upon and potential buyers/tenants are advised to recheck the measurements



**OFFICE ADDRESS**  
8a Regent Street  
Leamington Spa  
Warwickshire  
CV32 5HO

**OFFICE DETAILS**  
01926 354 400  
leamington@handlesproperty.co.uk