



PCM

£1,300 PCM

34 Lillington Road

Leamington Spa, CV32 5ZA

PROPERTY SUMMARY

A superb two double bedroom apartment forming part of a modern conversion of a period building located in a very desirable residential area. This first floor apartment offers well proportioned living space including an open plan living area with kitchen, a large master bedroom, second smaller double bedroom and a shower Room. UNFURNISHED and available late August 2025.

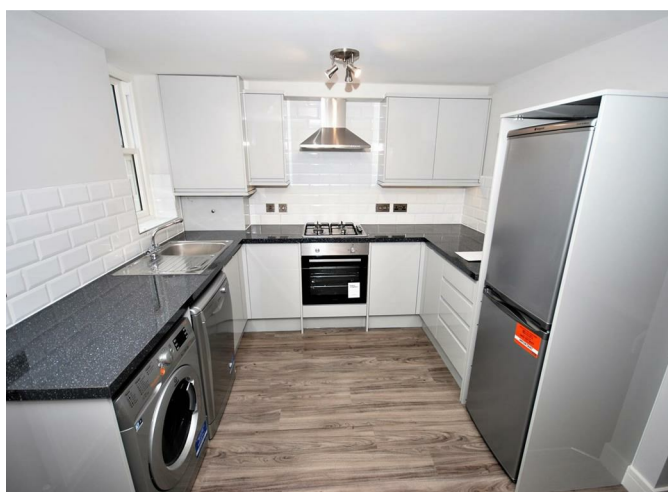
2



1



1



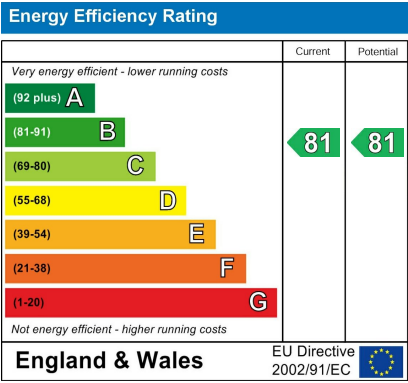
2

1

1







Agents Note: Whilst every care has been taken to prepare these particulars, they are for guidance purposes only. All measurements are approximate and are for general guidance purposes only and whilst every care has been taken to ensure their accuracy, they should not be relied upon and potential buyers/tenants are advised to recheck the measurements



OFFICE ADDRESS
8a Regent Street
Leamington Spa
Warwickshire
CV32 5HO

OFFICE DETAILS
01926 354 400
leamington@handlesproperty.co.uk