

PCM
£1,295 PCM
5 Milverton Terrace
Leamington Spa, CV32 5BE

PROPERTY SUMMARY

An impressive, two double bedroom duplex apartment. Comprising, two double bedrooms, the master having an Ensuite. Downstairs there is another bathroom and open planned Lounge/kitchen opening onto a private decked area and off road gated parking. Unfurnished and available from 30th September 2025.

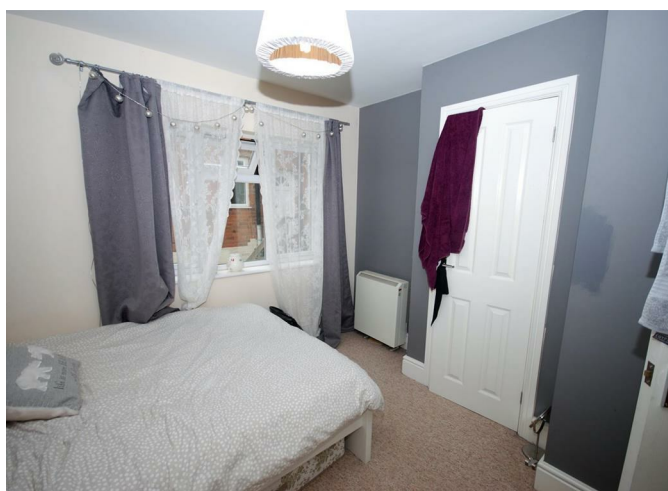
2



2



1





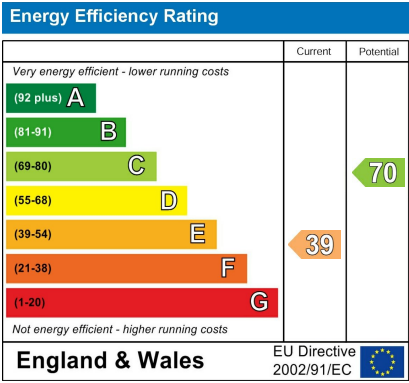
2

2

1







Agents Note: Whilst every care has been taken to prepare these particulars, they are for guidance purposes only. All measurements are approximate and are for general guidance purposes only and whilst every care has been taken to ensure their accuracy, they should not be relied upon and potential buyers/tenants are advised to recheck the measurements



OFFICE ADDRESS
8a Regent Street
Leamington Spa
Warwickshire
CV32 5HO

OFFICE DETAILS
01926 354 400
leamington@handlesproperty.co.uk