



West Heath Road | | London | NW3 7TW

£3,600 Per Month

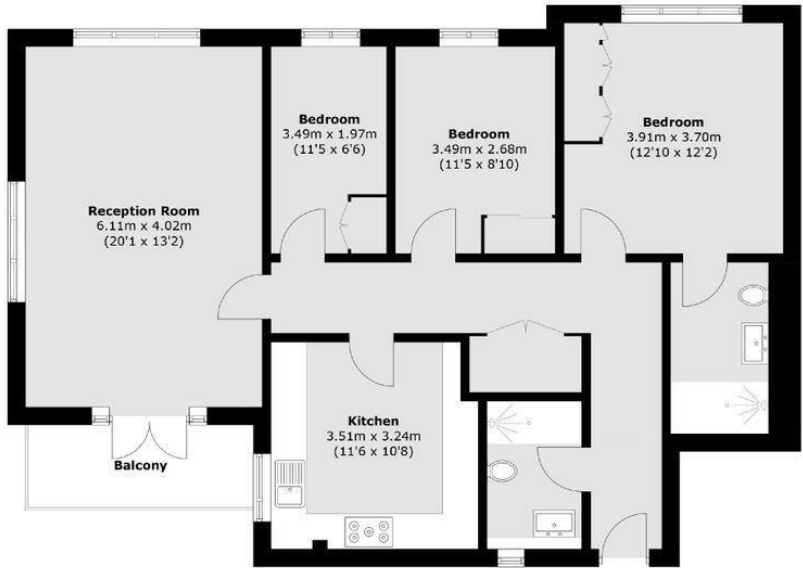
**numan**  
Estate Agents

West Heath Road |  
London | NW3 7TW  
£3,600 Per Month


Spacious and bright 3-bedroom, 2-bathroom flat located on the second floor (with lift) of a secure block on West Heath Road, NW3. The flat features a separate kitchen, a large living room, and a private balcony. Comes with secure garage parking and measures approx. 100 sqm.

Great location near Hampstead Heath, with easy access to Golders Green and Finchley Road.

Second floor with lift  
Balcony  
Separate kitchen  
Secure garage parking  
Gated block with entry system  
Approx. 100 sqm



Floor area (approx.): 96.8 sq. m (1042.0 sq. ft)  
Balcony area (approx.): 5.3 sq. m (57.0 sq. ft)

Energy Efficiency Rating		
	Current	Potential
Very energy efficient - lower running costs		
(92 plus) A	79	
(81-91) B		
(69-80) C		
(55-68) D		
(39-54) E		
(21-38) F		
(1-20) G		
Not energy efficient - higher running costs		
England & Wales		EU Directive 2002/91/EC 

19 College Parade Salusbury  
Road  
London  
NW6 6RN  
020 7372 3685  
hello@nu-man.co.uk  
<https://www.nu-man.co.uk/>