



House - Semi-Detached (EPC Rating: B)

**MOSS WAY, CIRENCESTER,  
GLOUCESTERSHIRE, GL7 1RS**  
PCM

**£1,500 PCM**

**CANNON ESTATES**  
SALES & LETTINGS



# 3 Bedroom House - Semi-Detached located in Cirencester

Cannon Estates are excited to introduce this well-presented three-bedroom semi-detached house, located in a popular development on the outskirts of Cirencester.

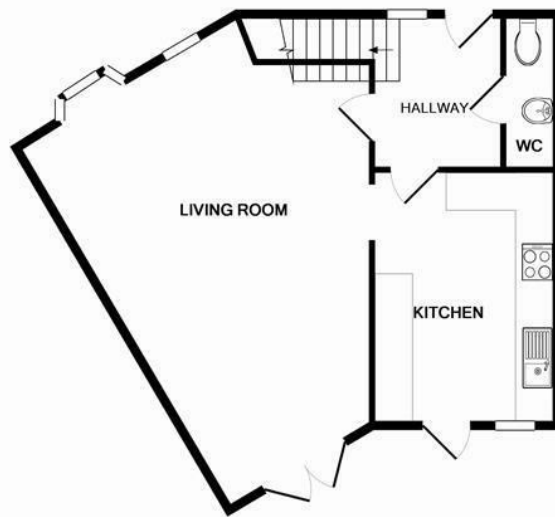
Available early November, this home greets you with a large entrance hall leading into an inner hallway. A downstairs cloakroom provides convenience for guests. The lounge/diner features patio doors opening onto the rear garden, creating a seamless indoor-outdoor living experience.

The kitchen is equipped with a full range of built-in appliances, making it perfect for modern living and culinary endeavors. The property boasts three bedrooms, with the master bedroom featuring an en-suite shower room for added privacy and comfort. The family bathroom is well-appointed, catering to the needs of a busy household.

Outside, the property benefits from a single garage and off-road parking for two cars, ensuring ample space for vehicles. The enclosed courtyard garden offers a private retreat for relaxation and outdoor activities.







GROUND FLOOR



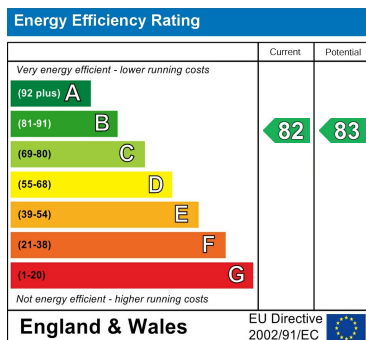
1ST FLOOR

Measurements are approximate. Not to scale. Illustrative purposes only  
Made with Metropix ©2014

Council Tax Band

**D**

Energy Performance Graph



Call us on

**01285 706900**

[info@cannon-estates.co.uk](mailto:info@cannon-estates.co.uk)

<https://www.cannon-estates.co.uk/>

Agents Note: Whilst every care has been taken to prepare these particulars, they are for guidance purposes only. All measurements are approximate and are for general guidance purposes only and whilst every care has been taken to ensure their accuracy, they should not be relied upon and potential buyers are advised to recheck the measurements.

**CANNON ESTATES**  
SALES & LETTINGS