

Flat (EPC Rating: B)

**BRIDGE ROAD, CIRENCESTER,
CIRENCESTER, GL7 1NJ**
PCM

£900 PCM

CANNON ESTATES
SALES & LETTINGS



1 Bedroom Flat located in Cirencester

Cannon Estates are excited to introduce this ground floor Maisonette on Bridge Road, available immediately. Featuring new flooring and carpets, a compact open-plan kitchen with a built-in oven, a cozy bedroom with built-in wardrobes, and a modern bathroom with an overhead shower. Enjoy a private garden with a patio and gravel area. Convenient access to local amenities and transport. Contact us to view this charming rental opportunity.

Cannon Estates are excited to introduce this charming ground floor Maisonette on Bridge Road, available immediately.

This delightful property offers a well-maintained and modern living space, with just a few steps to access the flat block. Inside, you'll find a newly updated interior featuring fresh flooring and carpets throughout.

The compact open-plan kitchen and living area is designed for efficiency and comfort. Despite its modest size, it's well laid out to maximize the available space, with the kitchen featuring a built-in oven and the living area providing a cozy spot for relaxation.

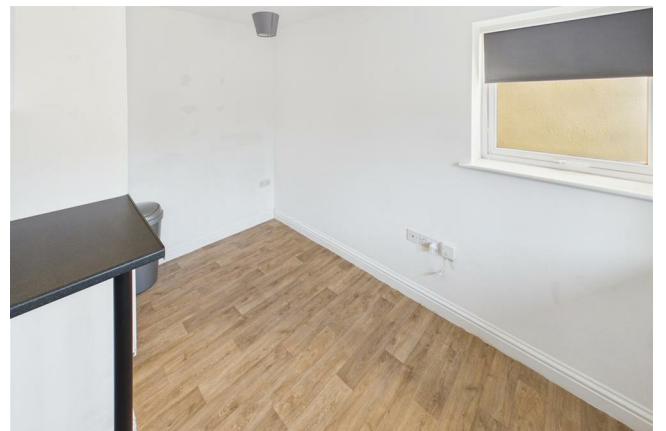
The flat includes a snug bedroom with built-in wardrobe space, ensuring convenient storage and a tidy environment.

The modern bathroom features a bath with an overhead shower, combining practicality with a contemporary design.

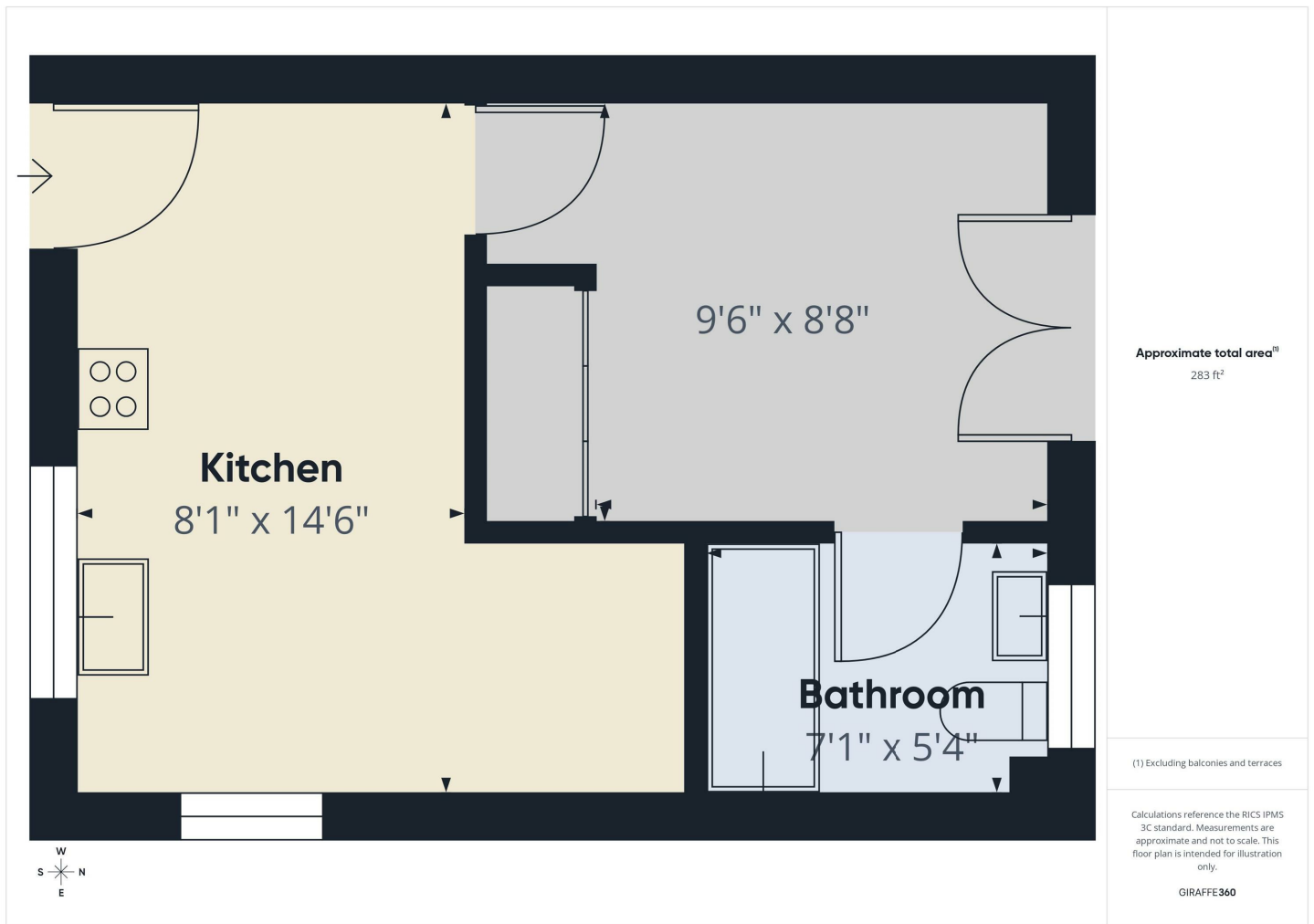
One of the standout features of this property is the private garden, complete with a charming patio area and a gravel space. This outdoor area is perfect for enjoying sunny days, hosting small gatherings, or simply relaxing in your own private retreat.

Located on Bridge Road, this flat offers convenient access to local amenities and transport links, making it a great choice for those seeking both comfort and accessibility.

Don't miss out on this fantastic rental opportunity. Contact us today to arrange a viewing and discover all that this delightful flat has to offer.



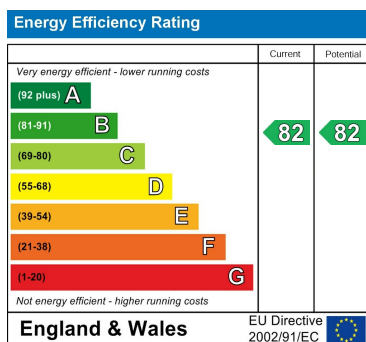
CIRENCESTER LETTINGS | 6 THE WOOL MARKET, CIRENCESTER, GLOUCESTERSHIRE, GL7 2PR



Council Tax Band

A

Energy Performance Graph



Call us on

01285 706900

info@cannon-estates.co.uk

<https://www.cannon-estates.co.uk/>

Agents Note: Whilst every care has been taken to prepare these particulars, they are for guidance purposes only. All measurements are approximate and are for general guidance purposes only and whilst every care has been taken to ensure their accuracy, they should not be relied upon and potential buyers are advised to recheck the measurements.

CANNON ESTATES
SALES & LETTINGS