



Flat (EPC Rating: D)

ABBEY HOUSE, CIRENCESTER, GL7 2QU

£290,000

CANNON ESTATES
SALES & LETTINGS



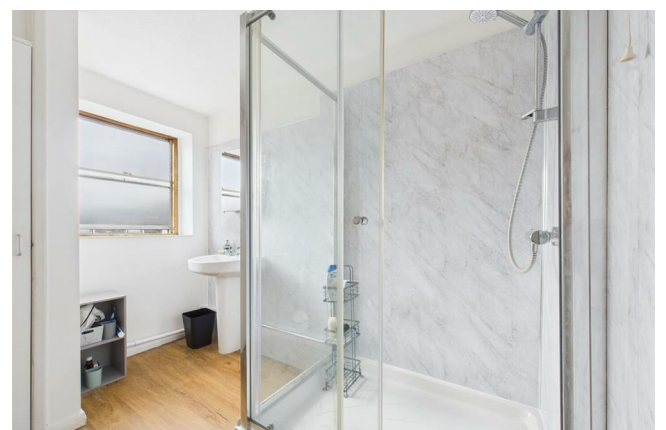
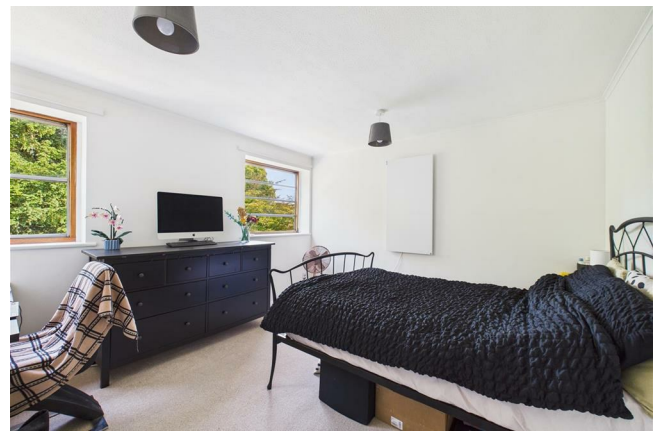
2 Bedroom Flat located in Cirencester

Welcome to Abbey House, a charming residence located in the picturesque town of Cirencester. This delightful house, built in 1965, offers a comfortable living space of 743 square feet, making it an ideal choice for small families, couples, or individuals seeking a cosy home.

Upon entering, you will find a well-proportioned reception room that serves as the heart of the home, perfect for entertaining guests or enjoying quiet evenings. The property boasts two inviting bedrooms, providing ample space for rest and relaxation. The bathroom and separate toilet are located at the end of the hall, ensuring ease of access and privacy for all residents.

One of the notable features of this property is the dedicated garage parking for one vehicle and additional outdoor lockable storage, a valuable asset in this charming town. The surrounding area is known for its beautiful scenery and rich history, making it a wonderful place to live.

Abbey House is not just a house; it is a place where you can create lasting memories. With its blend of comfort and practicality, this property is a fantastic opportunity for anyone looking to settle in Cirencester. Do not miss the chance to make this lovely house your new home.

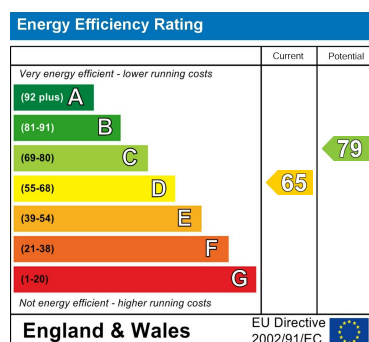




Council Tax Band

D

Energy Performance Graph



Call us on

01285 706900

info@cannon-estates.co.uk

<https://www.cannon-estates.co.uk/>

Agents Note: Whilst every care has been taken to prepare these particulars, they are for guidance purposes only. All measurements are approximate and are for general guidance purposes only and whilst every care has been taken to ensure their accuracy, they should not be relied upon and potential buyers are advised to recheck the measurements.

CANNON ESTATES
SALES & LETTINGS