



House - Mid Terrace (EPC Rating: D)

**WAVERLEY HOUSE, WATERMOOR ROAD,
CIRENCESTER, GLOUCESTERSHIRE, GL7
PCM**

£1,300 PCM

CANNON ESTATES
SALES & LETTINGS

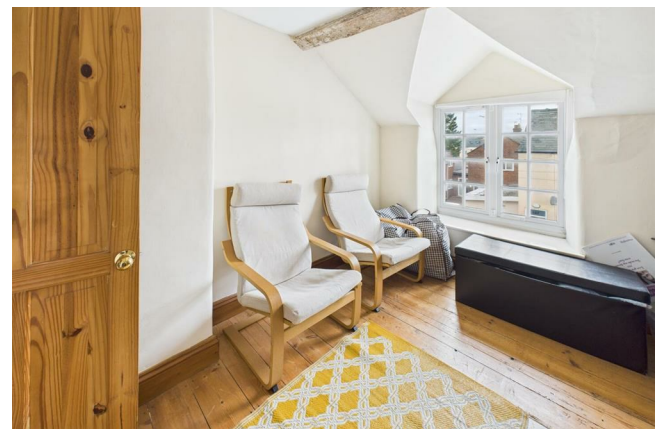


2 Bedroom House - Mid Terrace located in Cirencester

Nestled on the charming Watermoor Road in Cirencester, this delightful mid-terrace house offers a perfect blend of character and modern living. Built in the 1920s, the property exudes a sense of history while providing the comforts of contemporary life.

Upon entering, you are welcomed into a cosy reception room, ideal for relaxing or entertaining guests. The space is filled with natural light, creating a warm and inviting atmosphere. The house features two well-proportioned bedrooms, providing ample space for a small family or professionals seeking a comfortable home. The bathroom is conveniently located, ensuring ease of access for all residents.

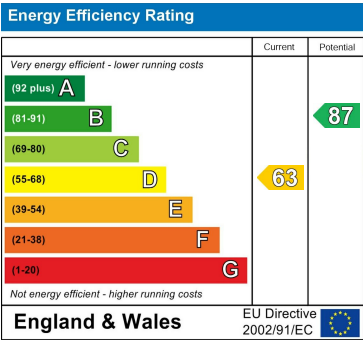
The property also boasts parking for one vehicle, a valuable asset in this desirable area. The location on Watermoor Road offers a peaceful residential setting while being just a short distance from the vibrant town centre of Cirencester, where you can enjoy a variety of shops, cafes, and local amenities.



Council Tax Band

C

Energy Performance Graph



Call us on

01285 706900

info@cannon-estates.co.uk

<https://www.cannon-estates.co.uk/>

Agents Note: Whilst every care has been taken to prepare these particulars, they are for guidance purposes only. All measurements are approximate and are for general guidance purposes only and whilst every care has been taken to ensure their accuracy, they should not be relied upon and potential buyers are advised to recheck the measurements.