



Apartment (EPC Rating: C)

**CHESTERTON LANE, CIRENCESTER, GL7**

**IXQ**  
PCM

**£1,250 PCM**

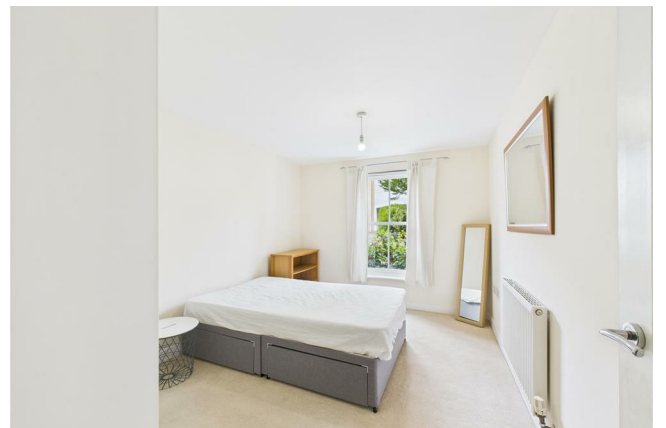
**CANNON ESTATES**  
SALES & LETTINGS



# 2 Bedroom Apartment located in Cirencester

Open plan living in a two double bedroom ground floor apartment situated within a period building.

There is a large entrance hall which leads on to a good sized living space with French doors giving access to a well maintained communal garden. The kitchen benefits from a range of built in appliances. There is a master bedroom with built in wardrobes and en-suite bathroom, as well as a further double bedroom and family bathroom. The communal area is accessed by electric gates and offers parking. Available for viewing. EPC Rating C.



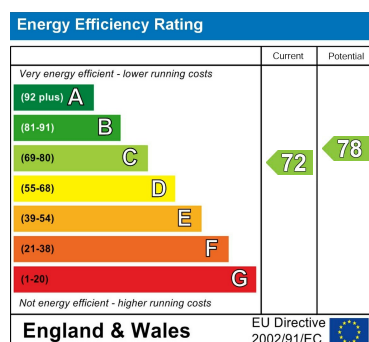




Council Tax Band

**B**

Energy Performance Graph



Call us on

**01285 706900**

**info@cannon-estates.co.uk**

**<https://www.cannon-estates.co.uk/>**

Agents Note: Whilst every care has been taken to prepare these particulars, they are for guidance purposes only. All measurements are approximate and are for general guidance purposes only and whilst every care has been taken to ensure their accuracy, they should not be relied upon and potential buyers are advised to recheck the measurements.

**CANNON ESTATES**  
SALES & LETTINGS