



House - Mid Terrace (EPC Rating:)

**WATERMOOR ROAD, CIRENCESTER,
GLOUCESTERSHIRE, GL7 1LD**
PCM

£1,500 PCM

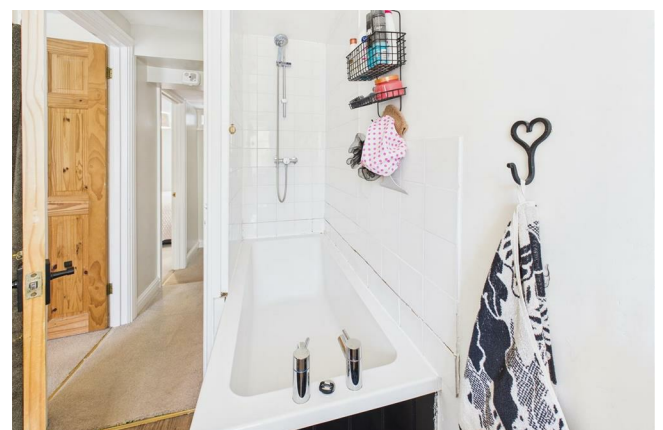
CANNON ESTATES
SALES & LETTINGS



3 Bedroom House - Mid Terrace located in Cirencester

Introducing a cosy 3 bedroom terrace house over 3 floors in charming Cirencester. Available September. Step into a warm and inviting space with a cottage like ambiance. This delightful house offers a living room, modern kitchen and three bedrooms. Embrace the tranquil atmosphere and unwind in the charming low maintenance garden. With convenient access to amenities. This is an opportunity to experience the perfect blend of comfort and convenience. Don't miss out on this coat retreat. Schedule a viewing today! EPC rating D.

This three bedroom, three storey, period town cottage located in a central and convenient position, close to a range of amenities and facilities. The property is offered in immaculate condition having been fully renovated and redecorated throughout. Comprising of a contemporary kitchen/diner with a range of built in appliances, cosy living room, three good sized bedrooms, the master of which is located on the second floor with exposed ceiling beams and the new white modern bathroom with shower over bath. Externally, there is a secluded lawned garden to the rear and a selection of patio and decked seating areas. We would urge early viewing. EPC rating D.

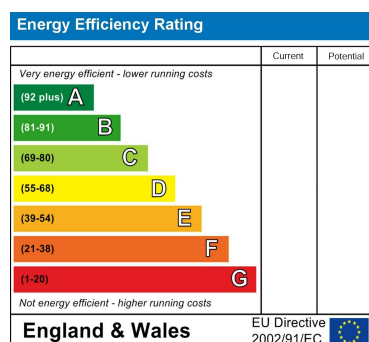




Council Tax Band

C

Energy Performance Graph



Call us on

01285 706900

info@cannon-estates.co.uk

<https://www.cannon-estates.co.uk/>

Agents Note: Whilst every care has been taken to prepare these particulars, they are for guidance purposes only. All measurements are approximate and are for general guidance purposes only and whilst every care has been taken to ensure their accuracy, they should not be relied upon and potential buyers are advised to recheck the measurements.

CANNON ESTATES
SALES & LETTINGS