



Bevans Lane | Hinton-On-The-Green | Evesham | WR11 2QY

Offers In The Region Of £380,000

—
COOPER & CO
—

Key features

- NO ONWARD CHAIN
- THREE BEDROOM TERRACED HOUSE
- LARGE REAR GARDEN
- EXTENDED KITCHEN DINING
- BI FOLD DOORS TO GARDEN
- MODERN AND HIGH QUALITY THROUGHOUT
- LARGE DRIVEWAY AND GARAGE
- SOUGHT AFTER VILLAGE LOCATION
- VIEWINGS 7 DAYS A WEEK

Description

*** NO ONWARD CHAIN, THREE BEDROOM MODERN TERRACED HOUSE, IN THE SOUGHT AFTER VILLAGE HINTON-ON-THE-GREEN ***

This delightful three-bedroom house on Bevans Lane offers a perfect blend of modern living and countryside surroundings. With an impressive 1,033 square feet, the property boasts of Three Bedrooms, Living Room, Kitchen Dining Room, Family Bathroom.

Outside, the expansive rear garden offers a wonderful space, with outlooks to the countryside. Additionally, the property benefits from a driveway and a garage, providing secure parking and extra storage.



Front

Property is approached by a generous driveway for 3+ cars with a tarmac paved driveway , with a paved pathway to the front. The Front also benefits from having a mature lawned garden with a shrub boarder and privacy hedge to the right.

Hallway

Carpeted flooring, stairs to the first floor , UPVC Window to front aspect.

Living Room

Carpeted flooring, feature log burner and surround, radiator, UPVC Windows to the front aspect. Double Doors, to the Dining Area.

Kitchen

Laminated flooring, mix of modern wall and base units surmounted by work surface. kitchen sink, tiles and Integrated appliances. Door access from internal to the garage. Adjacent is the open Dining Room.

Dining Room

Laminated flooring, UPVC window side aspect, with bi folding doors leading to the rear garden.







Bedroom 1

Carpeted flooring, UPVC window to rear aspect.

Bedroom 2

Carpeted flooring, UPVC window to front aspect.

Bedroom 3

Carpeted flooring, UPVC window to front aspect.

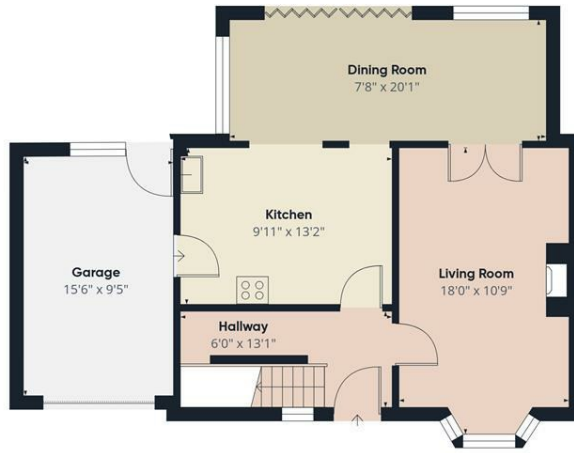
Bathroom

Tiled Flooring and Walls, Bath with stand alone shower, stand alone wash hand basin, low flush WC and UPVC window to front aspect.

Rear Garden

Large sized rear garden, East South facing. Garden features of a concrete patio area, leading onto a large lawned garden as you approach the end of the garden, there is a further patio area with footpath, which overlooks the countryside.

Floor plans



Floor 0



Floor 1



Approximate total area⁽¹⁾

1188 ft²

Reduced headroom

28 ft²

(1) Excluding balconies and terraces.

Reduced headroom

Below 5 ft

Calculations reference the RICS IPMS 3C standard. Measurements are approximate and not to scale. This floor plan is intended for illustration only.

GIRAFFE360

Energy Efficiency Rating

	Current	Potential
Very energy efficient - lower running costs		
(92 plus) A		
(81-91) B		
(69-80) C		
(55-68) D		
(39-54) E	42	
(21-38) F		
(1-20) G		
Not energy efficient - higher running costs		
England & Wales	EU Directive 2002/91/EC	

COOPER & CO

1 Port Street
Evesham
Worcestershire
WR11 3LA
01386 574 000

sales@cooperandcoestateagents.co.uk