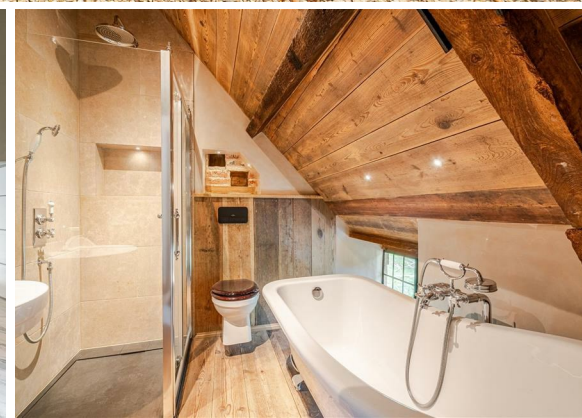




Outstanding
Grade II Listed
Cottage
near Malmesbury

£4,500 Per Month

Manager's Cottage
Near Malmesbury



Victoria Allman
lettings

- Stunning Grade II listed period house in breathtaking location
- Exclusive location providing an ideal country retreat
- Newly refurbished to the highest standards
- Beautifully landscaped private garden
- EPC Rating D
- Council Tax Band C (Wiltshire)
- Available from March on a long-term let
- Not suitable for children or pets
- Property location to be provided on appointment



2



2



1



D

SUMMARY

Manager's Cottage is a stunning two bedroom Grade II Listed period home situated within the privacy of an exclusive countryside location on the outskirts of Malmesbury. The property is exceptionally well presented throughout, and offers the perfect retreat for those seeking tranquillity in beautiful and unique rural surroundings.

Manager's Cottage is available on a long-term let from March 2026. Sorry, not suitable for children or pets.



DESCRIPTION

This beautiful Grade II listed period home has been completely refurbished to a high specification throughout, balancing original features with an impeccable contemporary finish. You enter Manager's Cottage from an elegant courtyard with views over the surrounding country estate. A welcoming entrance hall takes you into a beautifully designed and cosy living room complete with exposed timber beams, oak flooring and lots of natural light. The living room continues out to an immaculate landscaped garden with more stunning country views. Off the living room is a small, well-equipped kitchen and a shower room with WC.

Upstairs has been completely refurbished to an exceptional standard, with two immaculate well-proportioned double bedrooms. The bathroom incorporates a standalone bath and separate shower - all beautifully presented.

SITUATION

The property forms part of a Grade II listed moated country house to the south of the ancient hilltop town of Malmesbury, surrounded by a beautiful country estate that was a former medieval monastic deer park owned by the nearby Abbey. Traditionally a market town serving the rural area of North West Wiltshire, Malmesbury is reputed to be the oldest borough in England created by Charter in 880 AD by Alfred the Great.

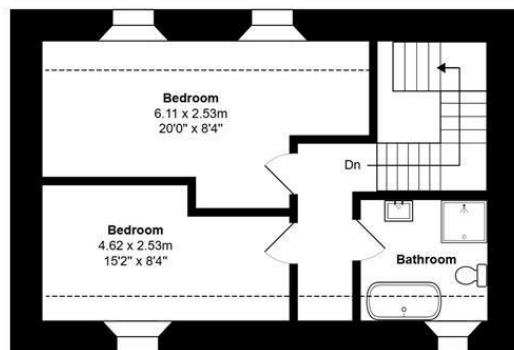
Today, the town offers numerous independent shops, pubs and restaurants including a Waitrose store and a regular weekly Farmer's market. Malmesbury and the surrounding towns and villages also offer a broad range of recreational and leisure facilities to suit all tastes. The area is well known for its royal connections, with King Charles' Highgrove House nearby, and the beautiful Westonbirt Arboretum also less than 15 minutes drive.

The M4 motorway (J17) is just 10 minutes' drive to the south providing fast road access to the major urban centres of Bath, Bristol and Swindon together with London and the West Country. Mainline rail services are available from Chippenham and Kemble (London Paddington in around 75 minutes).

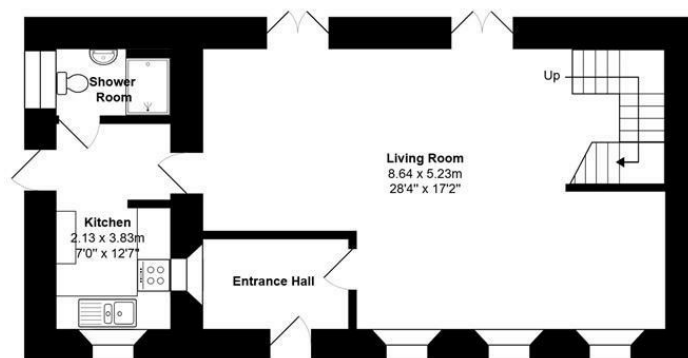


Showing the stunning rear garden at Manager's Cottage





First Floor



Ground Floor

Total Area: 103.0 m² ... 1109 ft²

All measurements are approximate and for display purposes only

REQUIRED INFORMATION

We understand the property has mains electricity, water, drainage and biomass central heating. Ultrafast broadband is available in this area; mobile coverage is classed as good outdoors – please check the Ofcom website for more information. We are not aware of any issues of potential impact including building safety, planning permission or proposed developments, flood risk, and other restrictions.

Energy Efficiency Rating		Current	Potential
Very energy efficient - lower running costs			
(92 plus) A			
(81-91) B			
(69-80) C			79
(55-68) D		59	
(39-54) E			
(21-38) F			
(1-20) G			
Not energy efficient - higher running costs			
England & Wales		EU Directive 2002/91/EC	

DIRECTIONS

Directions to the property will be provided on appointment.

CONTACT

lettings@victoriaallman.co.uk
01666 338866

www.victoriaallman.co.uk



Victoria Allman
lettings