



7 Bedroom  
Farmhouse  
located in Shipton  
Moyne

£6,750 PCM

Hodges Farmhouse  
Tetbury  
GL8 8PR



Victoria Allman  
lettings

- Stunning period farmhouse
- Extensive gardens
- 4 Reception Rooms
- Beautifully fitted AGA kitchen
- 7 Bedrooms
- Ample parking
- Triple Garage
- Council Tax Band H £4340 pa
- EPC Rating E



7



3



4



E

## SUMMARY

A magnificent 7 bedroom period farmhouse situated within a peaceful and very private rural setting located on the edge of the popular Cotswold village of Shipton Moyne. Available May 2025.

## DESCRIPTION

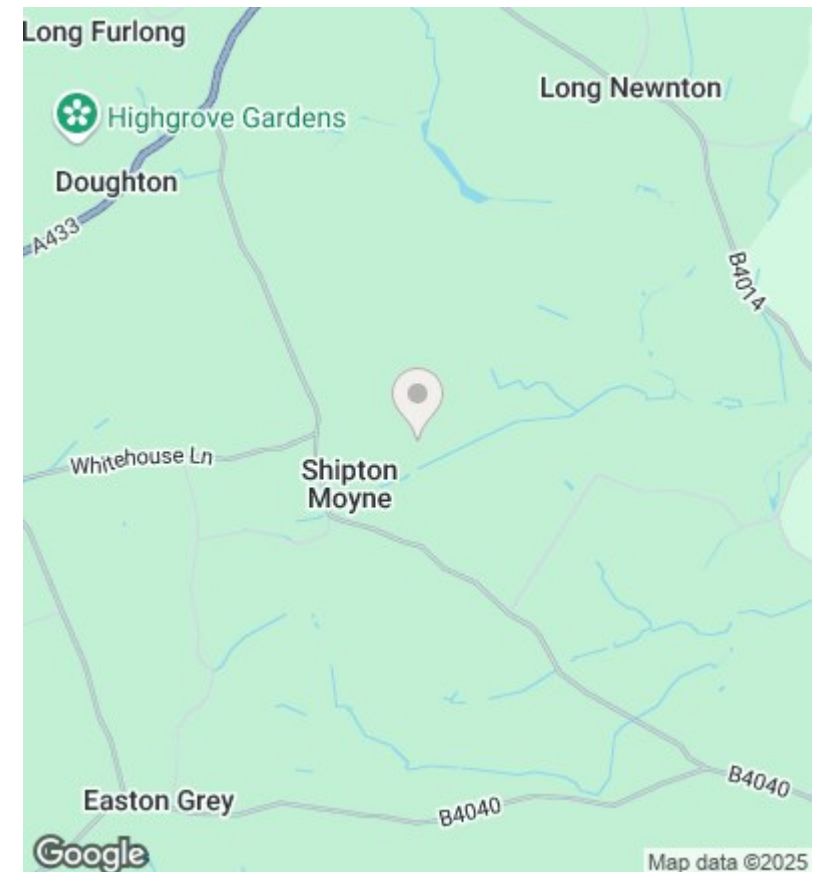
This magnificent detached period farmhouse offers elegant country living within a peaceful and very private rural setting located on the edge of the popular Cotswold village of Shipton Moyne. The property is set amongst stunning countryside with direct access onto walking routes and is also situated within walking distance to the pub. The farmhouse boasts many fine period features and substantial accommodation of over 4200 sq.ft. spanning over three floors.

The ground floor briefly comprises four spacious reception rooms and a beautifully fitted AGA kitchen. On the first floor there are five bedrooms, three bathrooms (1 en-suite to the master) whilst the top floor has two further bedrooms.

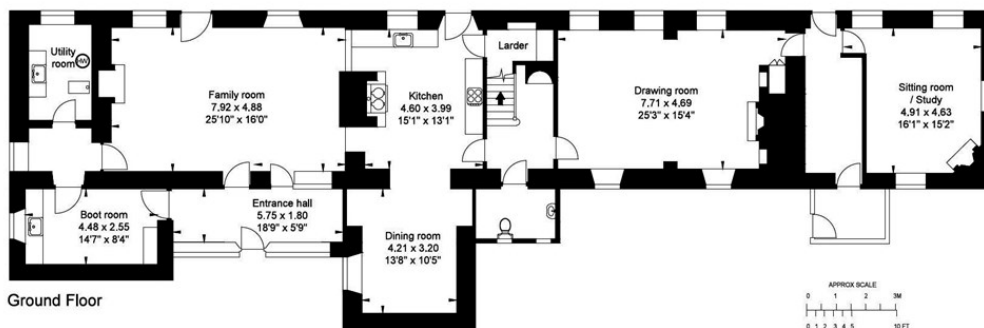
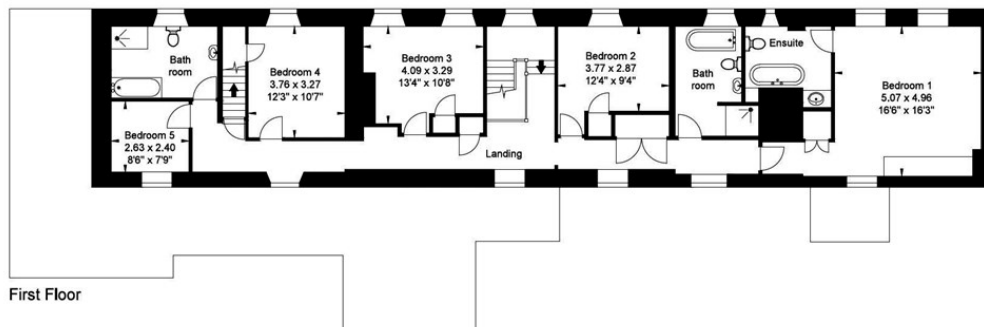
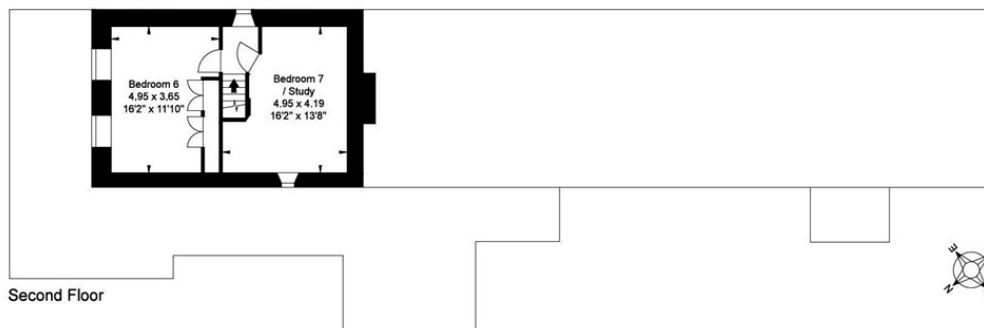
The farmhouse is surrounded by mature grounds and gardens laid predominately to lawn with well-established trees. There is ample private parking and a triple garage.

## SITUATION

Shipton Moyne is a beautiful and sought after Cotswold village situated 3 miles south of Tetbury. The popular Cat and Custard Pot pub is situated within walking distance from the property whilst the village also has a village hall, church and a playing field. Close by are the market towns of Malmesbury and Tetbury and both towns offer a wide range of shops including Waitrose and Tesco supermarkets, services, excellent schools and leisure facilities. Junctions 17 & 18 of the M4 are both within 20 minutes' drive providing easy commuter access to Bath, Bristol and Swindon whilst rail services to London-Paddington are available from Chippenham and Kemble.



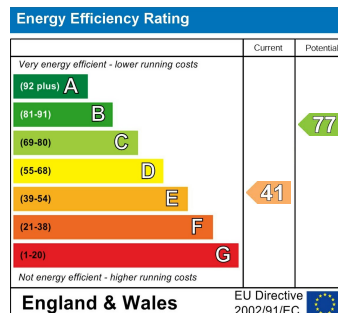




This plan is for guidance only and must not be relied upon as a statement of fact.

Hodges Farmhouse  
Shipton Moyne

APPROXIMATE GROSS INTERNAL FLOOR AREA:  
396 sq m (4,263 sq ft)  
© Cotswold Plans Ltd. 01386 430176  
ma/6925



## DIRECTIONS

From the centre of the village, head north passing the Cat & Custard Pot Pub and take the right hand turn at the crossroads. Follow the lane all the way onto a private drive to locate the property. Sat nav postcode GL8 8PR

## CONTACT

lettings@victoriaallman.co.uk  
01666 338866

www.victoriaallman.co.uk



**Victoria Allman**  
lettings