



3 Bedroom
Barn Conversion
in Farleaze,
near Sherston

£2,600 PCM

Farleaze Lodge
Pig Lane
Farleaze
Malmesbury
SN16 0LB



Victoria Allman
lettings

- Stunning and beautifully presented three-bedroom period cottage
- Lovely rural setting just off the historic Fosse Way
- Highly impressive open plan living/dining room with modern fitted kitchen
- 3 double Bedrooms, 3 bathrooms
- Landscaped garden and patio
- EPC Rating D
- Council Tax Band B (Wiltshire)
- Available furnished or part-furnished
- Long let or short licence considered



SUMMARY

Farleaze Lodge is a stunning three-bedroom period cottage tucked away in the grounds of a larger estate in Farleaze, a beautiful rural hamlet near to Sherston.

Fully modernised and exceptionally well presented throughout, this property offers the perfect retreat for those looking to enjoy the South Cotswold countryside and surrounding towns and villages.

Available furnished or part-furnished for a short- or long-let from June 2026.

DESCRIPTION

Farleaze Lodge has been beautifully finished to an excellent modern standard internally whilst retaining a wealth of period features. The property is deceptively spacious extending in all to 1,788 sq.ft. The ground floor is primarily open plan with a modern fitted kitchen complete with breakfast bar next to an impressive living/dining room with a high vaulted ceiling. There is a woodburning stove at the centre of the living room and large windows which make the most of the stunning country outlook. Off to one side there is a large principal bedroom on the ground floor featuring a charming fireplace and complete with a walk-in wardrobe and en-suite shower room. To the rear there is a further ground floor bedroom adjoining a stylish bathroom with shower over bath. Upstairs, there is a snug area overlooking the galleried living room leading to a dressing room, and then a further bedroom which also benefits from a 'hidden' en-suite shower room. The views from the property are second to none.

At the rear of the property, there is an external utility room providing useful storage as well as a patio overlooking a lawn for alfresco dining. Ample parking is available on a gravelled driveway.

SITUATION

The rural hamlet of Farleaze is located just off the historic Fosse Way, two miles from the much sought after village of Sherston. With its broad High Street and historic stone houses, Sherston offers a broad range of amenities including a popular village shop with post office, a wine shop, a hairdresser, cafes and the excellent Rattlebone Inn. Other good dining pubs nearby include The Vine Tree in Norton and The Neeld Arms in Grittleton. A more comprehensive range of amenities are available in the nearby market towns of Malmesbury (5 miles) and Tetbury (8 miles) including a Waitrose store, excellent independent shops and boutiques, cafes and restaurants.

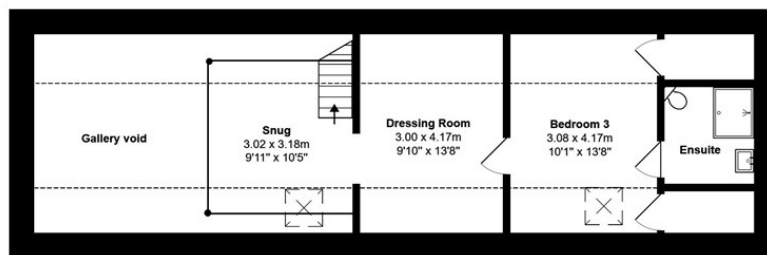
Junctions 17 & 18 of the M4 are both within 15 minutes' drive providing easy commuter access to Bath, Bristol and Swindon whilst fast rail services to London-Paddington and other regional centres are available from Chippenham.



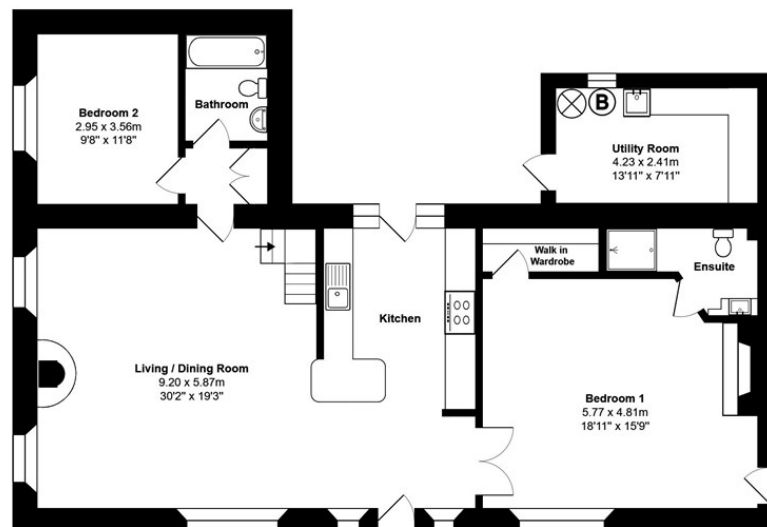


Farleaze Lodge - stunning open plan living / dining room with country views





1st Floor



Ground Floor

Total Area: 166.1 m² ... 1788 ft²

All measurements are approximate and for display purposes only

REQUIRED INFORMATION

We understand the property has mains electricity, a private borehole water supply, septic tank drainage and oil-fired central heating. Standard broadband is available in this area; mobile coverage is classed as good outdoors and in-home – please check the Ofcom website for more information. We are not aware of any issues of potential impact including building safety, flood risk, and other restrictions. There is a proposed solar farm development nearby which is under consultation.

DIRECTIONS

From Sherston, head northeast on the B4040 towards Malmesbury. On leaving the village, turn right at the crossroads and continue for around 1.5 miles into Ladyswood. Turn right onto the Fosse Way and continue for 300m, then turn left onto Pig Lane. Farleaze Farm and Farleaze Lodge are located on the right after half a mile.

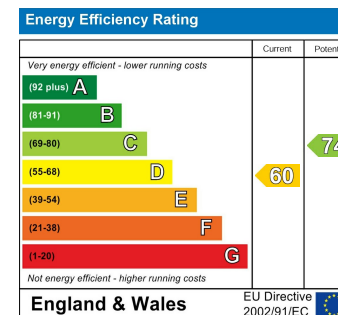
Postcode: SN16 0LB

What3Words:
///condition.national.editor

CONTACT

lettings@victoriaallman.co.uk
01666 338866

www.victoriaallman.co.uk



Victoria Allman
lettings