



3 Bedroom
Cotswold Cottage
in Tetbury Upton

£1,850 PCM

Lodge Cottage
Tetbury Upton
GL8 8LP



Victoria Allman
lettings

- Character period cottage - beautifully renovated
- Highly desirable countryside location a short drive from Tetbury
- Open plan kitchen/dining room
- Two further reception rooms
- Three bedrooms, two bathrooms
- Large private lawned garden
- Private drive for off-street parking
- EPC rating E
- Council tax Band D (Wiltshire)
- Available January 2026



3



2



3



E

SUMMARY

Lodge Cottage is a beautifully refurbished three bedroom Cotswold stone cottage on the edge of a country estate in Tetbury Upton, just over a mile to the north of Tetbury.

Back on the market after a major extension and renovation, the cottage is an ideal home for a professional couple or family with older children looking to enjoy the Cotswold countryside and charms of Tetbury and the surrounding area. The property is available unfurnished from January 2026 on a long term let.

DESCRIPTION

Lodge Cottage is a beautifully renovated Cotswold stone cottage situated on the edge of a private estate, and surrounded by beautiful walks and views.

The entrance porch leads into a light and cosy living room complete with an exposed brickwork fireplace with woodburning stove. This flows into a second reception room which could also provide a great study for working from home. Next is a large and impressive kitchen/dining room, equipped with Shaker style fitted units and integrated appliances. French doors open out onto the garden on two sides. The ground floor is completed by a useful utility room and WC.

There are two staircases to the first floor. The first goes from the kitchen to the master bedroom which has a stunning new ensuite bathroom and built-in wardrobes. The second staircase runs from the living room to two further good size rooms and a second bathroom.

There is off-road parking to the side of the property as well as a lovely garden that is laid mostly to lawn with mature trees to the rear and a patio area off the kitchen/dining room.

SITUATION

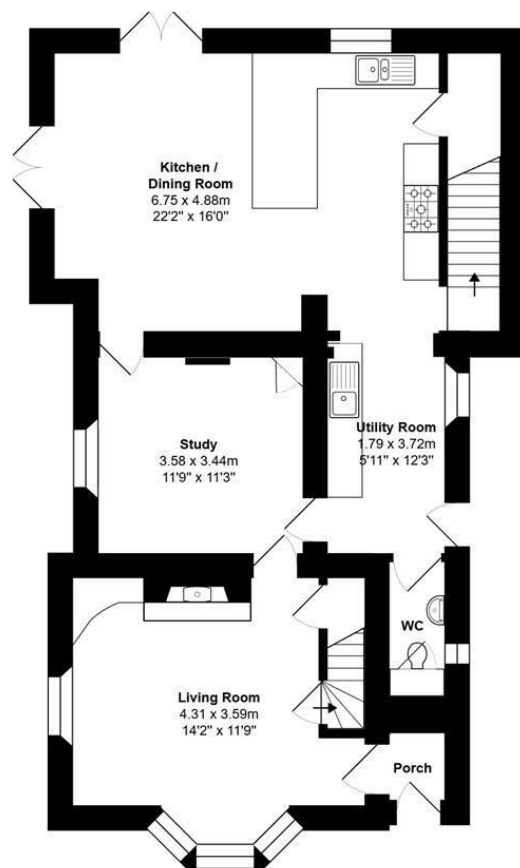
The pretty hamlet of Tetbury Upton is situated just a over half a mile from Tetbury and comprises a handful of beautiful country houses and cottages. The hamlet is surrounded by rolling Cotswold countryside and is perfect for country walks. The area is well known for its royal connections, with King Charles' Highgrove House and Princess Anne's Gatcombe House both close by, and the beautiful Westonbirt Arboretum also less than 10 minutes drive away. Tetbury town centre offers a broad range of shops and amenities for everyday needs including a large supermarket, hospital, and a post office. There are also a number of quality boutiques, delicatessans and antique shops, as well as some excellent restaurants and cafes which contribute to a busy social scene. Conveniently located less than half an hour from both the M4 and M5 motorways, Tetbury Upton is within easy reach of Cirencester, Cheltenham, Bath, Bristol and Swindon. There is good access to nearby Kemble Railway Station which provides regular fast services to London and other regional centres.



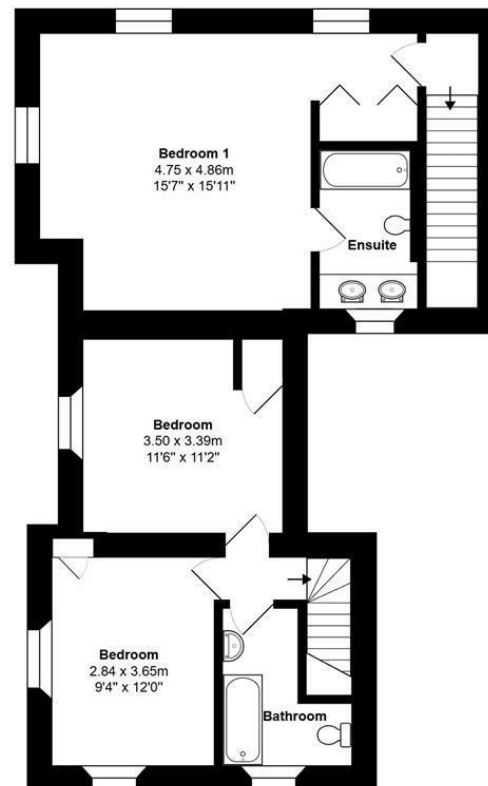


Lodge Cottage, Tetbury Upton - Kitchen / Dining Room





Ground Floor



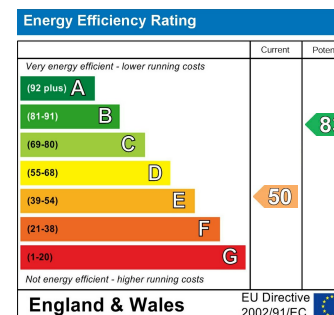
First Floor

Total Area: 160.8 m² ... 1731 ft²

All measurements are approximate and for display purposes only

REQUIRED INFORMATION

We understand the property has mains electricity, water, drainage and gas fired central heating. Ultrafast broadband is available in this area; mobile coverage is classed as good outdoors – please check the Ofcom website for more information. We are not aware of any issues of potential impact including building safety, planning permission or proposed developments, flood risk, and other restrictions.



DIRECTIONS

Head north out of Tetbury on the B4014 towards Avening. On entering Tetbury Upton, follow the road round to the right. The driveway for Lodge Cottage is on the left, just after the road curves round to the left. Lodge Cottage is approx. 1.5 miles (3 minutes drive) from Tetbury.

Postcode: GL8 8LP

What3Words:
///blip.racing.froze

CONTACT

lettings@victoriaallman.co.uk
01666 338866

www.victoriaallman.co.uk



Victoria Allman
lettings