



Farm Close | | Yateley | GU46 6HX

£525,000

Freehold

*Waterford's* W  
Residential Sales & Lettings



Farm Close |  
Yateley | GU46 6HX  
£525,000

Offered to the market with no onward chain, this three-bedroom detached bungalow is situated at the end of a cul-de-sac on a generous corner plot.

- Detached bungalow
- No onward chain
- Two reception rooms
- Shower room
- Large corner plot garden
- Three bedrooms
- Kitchen with fitted oven and hob
- Driveway with off street parking leading to a garage

## Description

Located at the very end of a cul-de-sac and offered to the market for the first time in 60 years, this detached three-bedroom bungalow sits on a large corner plot with a generous garden. The accommodation comprises a spacious entrance hall with a storage cupboard, a lounge with a feature fireplace, and an archway leading to the dining area with access to the rear garden. The property offers three bedrooms, a shower room, and a large loft space. Additional features include gas central heating, a driveway with parking for several cars, and a garage.

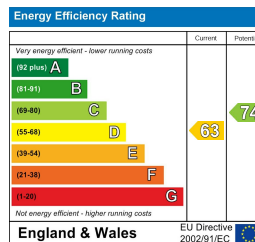
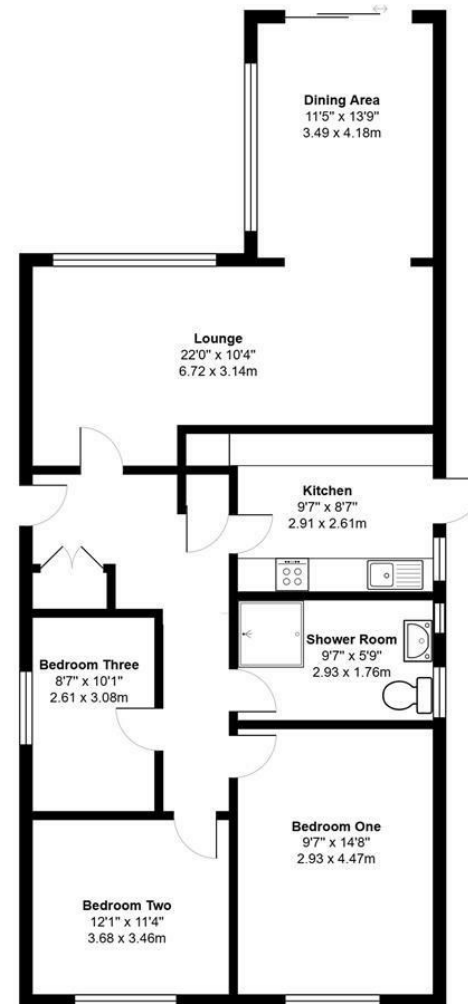
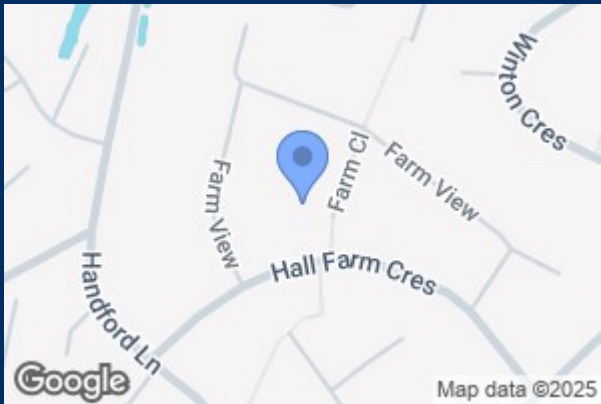






## Location

Positioned in a highly sought-after and peaceful location, this property offers convenient access to Yateley town centre, local schools, amenities, and excellent transport links to surrounding towns and villages by road and rail, including the M3 and M4 motorways.



35 Plough Road  
Yateley  
Hampshire  
GU46 7UW  
01252 870222  
yateley@waterfords.co.uk