



Ramsdell Road | | Fleet | GU51 1DA

Asking Price £225,000

Leasehold

Waterford's W
Residential Sales & Lettings

Ramsdell Road |
Fleet | GU51 1DA
Asking Price £225,000

A bright and spacious 1-bedroom apartment offering 649 sq ft of well-planned living space, featuring a generous living room with private balcony, a spacious kitchen, and a well-proportioned bedroom with dedicated built-in wardrobe. Perfectly designed for comfort and convenience, this home is ideal for first-time buyers, downsizers, or investors.

- Generous living room with balcony access
- Modern, well-designed kitchen
- Popular Elvetham Heath development
- Airing cupboard for additional storage
- Private balcony
- Impeccably presented one-bedroom home
- Two allocated parking spaces
- Top floor apartment
- Ideal for first-time buyers, downsizers, or investors
- Plenty of natural light throughout the property

This spacious and well-designed one-bedroom apartment offers both comfort and functionality, making it an ideal home for singles, couples, or investors alike.

As you step inside, you're greeted by a welcoming hallway that flows seamlessly into the bright and airy living room. Large windows flood the space with natural light, and French doors lead out to a private balcony—perfect for enjoying your morning coffee or





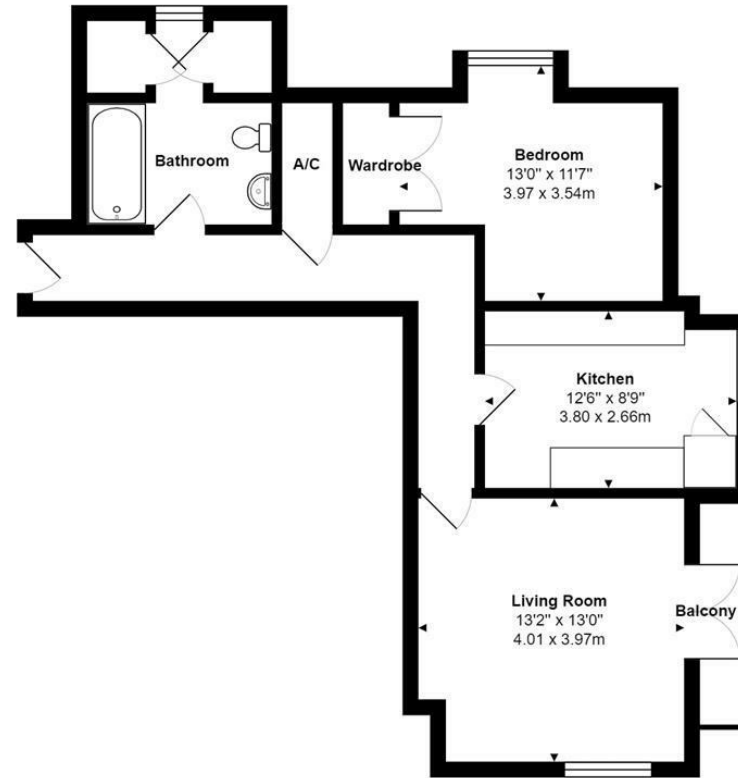
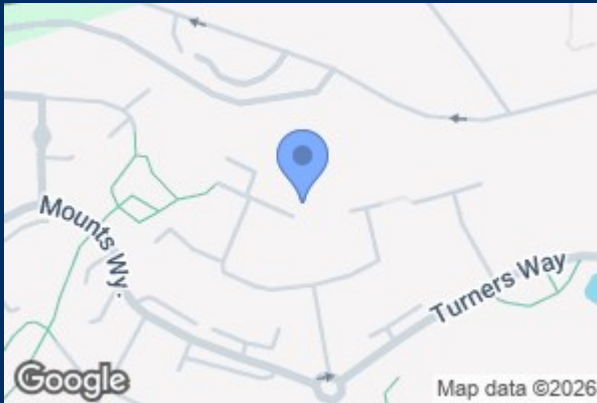
unwinding in the evening. Adjacent to the living room, the kitchen offers generous counter space and storage, with plenty of room for cooking. The bedroom is equally impressive in size, featuring a dedicated wardrobe area for excellent storage solutions. The bathroom is well-appointed with a full-sized bathtub, complemented by a separate A/C closet for added convenience.

Adding further appeal, the property comes with two allocated parking spaces and is presented in outstanding decorative order throughout, ready for you to move in and enjoy immediately.

Nestled in the ever-popular development of Elvetham Heath and next to Elvetham Heath nature reserve. Built by Charles Church the apartment provides easy access to Morrisons superstore, the village centre and many other local amenities.

Are you looking to buy a property in Fleet? Then Waterfords Estate Agents are here to help you. As your trusted local estate agent in Surrey and Hampshire since 1995, you can ask us any questions about Fleet and the surrounding area. Feel free to pop into our branch in the Hart Centre to talk to us or call us on 01252 623333. We look forward in assisting you with buying a home in Fleet!

Are you wondering: how much is my house worth in Fleet? Waterfords Estate Agents can provide you with a home valuation based on the latest sales agreed for similar properties as well as valuable insights into buyers based on our extensive database. We take an analytical approach to ensuring that your property is priced correctly and ready to be sold quickly. All our advice is free and without obligation.



Total Area: 649 ft² ... 60.3 m²
All measurements are approximate and for display purposes only

Energy Efficiency Rating		
	Current	Potential
Very energy efficient - lower running costs		
(12 plus) A		
(81-91) B		
(69-80) C	76	78
(55-68) D		
(39-54) E		
(21-38) F		
(1-20) G		
Not energy efficient - higher running costs		
England & Wales	EU Directive 2002/91/EC	

39 The Hart Centre
Fleet
Hampshire
GU51 3LA
01252 623333
fleet@waterfords.co.uk