



Cherberry Close | Fleet | GU51 2TD

Asking Price £175,000

Leasehold



Cherberry Close |
Fleet | GU51 2TD
Asking Price £175,000

Waterford's are pleased to present this charming 1-bedroom ground floor apartment to the market ideally situated in the highly sought-after Ancells Farm area of Fleet, Hampshire. Its location is within walking distance of local amenities and excellent transport links.

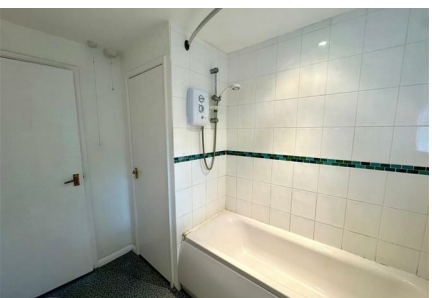
- No Onward Chain Complication
- One Bedroom Apartment
- Ground Floor
- Three Piece Bathroom
- Ancells farm Location
- Allocated Parking
- Close to Local Amenities
- Lease Over 900 Years

Property Description

Waterford's are pleased to present this charming 1-bedroom ground floor apartment to the market ideally situated in the highly sought-after Ancells Farm area of Fleet, Hampshire. Its location is within walking distance of local amenities and excellent transport links,.

The apartment is in good condition throughout and boasts a spacious double bedroom, a large reception area along with a separate kitchen and a well-appointed 3-piece bathroom.





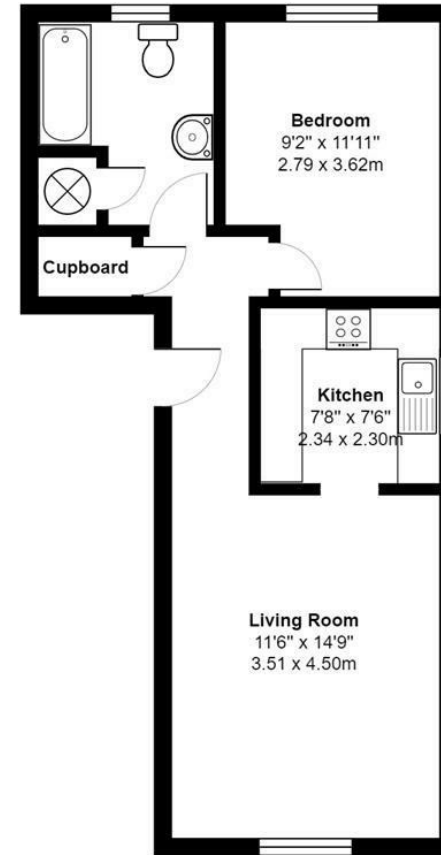
Additionally, the property benefits from allocated parking, providing a hassle-free parking experience.

Offered with no onward chain, this is an excellent opportunity for first-time buyers, investors, or those looking to downsize. Don't miss out on this fantastic home in a prime location—schedule your viewing today!

Disclaimer: This Information has been obtained and provided by the Property Owner

Are you looking to buy a property in Fleet? Then Waterfords Estate Agents are here to help you. As your trusted local estate agent in Surrey and Hampshire since 1995, you can ask us any questions about Fleet and the surrounding area. Feel free to pop into our branch in the Hart Centre to talk to us or call us on 01252 623333. We look forward in assisting you with buying a home in Fleet!

Are you wondering: how much is my house worth in Fleet? Waterfords Estate Agents can provide you with a home valuation based on the latest sales agreed for similar properties as well as valuable insights into buyers based on our extensive database. We take an analytical approach to ensuring that your property is priced correctly and ready to be sold quickly. All our advice is free and without obligation.



All measurements are approximate and for display purposes only

Total Area: 473 ft² ... 43.9 m²

Energy Efficiency Rating		Current	Potential
Very energy efficient - lower running costs			
(12 plus) A			
(81-91) B			
(69-80) C			
(55-68) D			
(39-54) E			
(21-38) F			
(1-20) G			
Not energy efficient - higher running costs			
England & Wales		EU Directive 2002/91/EC	

39 The Hart Centre
Fleet
Hampshire
GU51 3LA
01252 623333
fleet@waterfords.co.uk