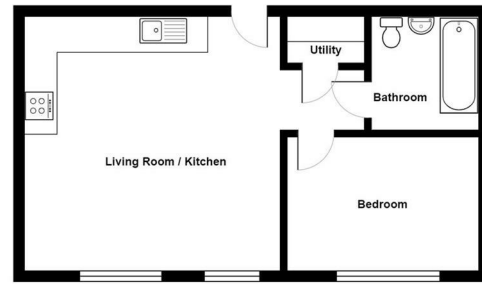




Normandy House | Alencon Link | Basingstoke | RG21 7BZ

£1,150 PCM

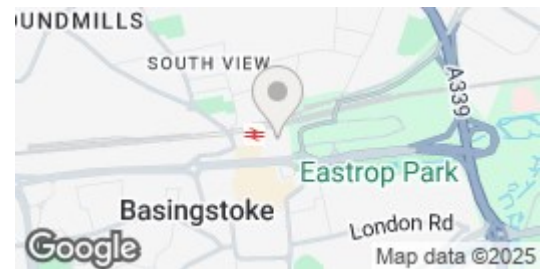
*Waterfords*   
Residential Sales & Lettings



Total Area: 539 ft² ... 50.0 m²



| Energy Efficiency Rating                    |                         |           |
|---|-------------------------|-----------|
|   | Current                 | Potential |
| Very energy efficient - lower running costs |                         |           |
| (92 plus) <b>A</b>                          |                         |           |
| (81-91) <b>B</b>                            |                         |           |
| (69-80) <b>C</b>                            |                         |           |
| (55-68) <b>D</b>                            |                         |           |
| (39-54) <b>E</b>                            |                         |           |
| (21-38) <b>F</b>                            |                         |           |
| (1-20) <b>G</b>                             |                         |           |
| Not energy efficient - higher running costs |                         |           |
| <b>England &amp; Wales</b>                  | EU Directive 2002/91/EC |           |



## Description

A stylish and well-presented one-bedroom apartment located in the sought-after Normandy House development in the heart of Basingstoke. This modern property features an open-plan living area with a fully fitted kitchen, a spacious double bedroom, and a contemporary bathroom. Ideally situated within walking distance of Basingstoke town centre, mainline train station, and local amenities, making it perfect for professionals or couples seeking convenient, comfortable living.

## Key features

- Additional Parking For £100pm
- Secure Multi Story Car Park On Site
- LED Mirror With Shaver Socket & Demister Function
- Town Centre Location
- Minimum Term 12 Month Let
- One Bedroom & Two Bedroom Apartments
- Integrated Fridge Freezer, Dishwasher, Ceramic Hob & Electric Oven
- Rain Shower & Heated Towel Rail
- Available Now



35 Plough Road  
Hampshire  
GU46 7UW  
01276 903006

surreylettings@waterfords.co.uk  
<https://www.waterfords.co.uk/>