

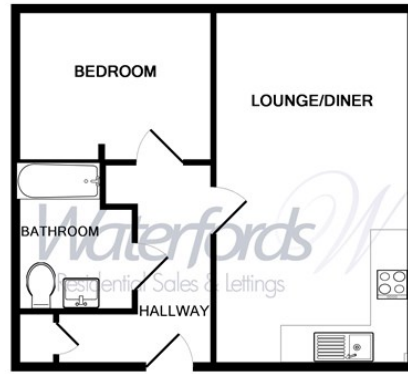


Flat 1

Nym Close | | Camberley | GU15 3HG

£1,150 PCM

Waterfords W
Residential Sales & Lettings



Whilst every attempt has been made to ensure the accuracy of the floor plan contained here, measurements of doors, windows, rooms and any other items are approximate and no responsibility is taken for any error, omission, or mis-statement. This plan is for illustrative purposes only and should be used as such by any prospective purchaser. The services, systems and appliances shown have not been tested and no guarantee as to their operability or efficiency can be given
Made with Metropix ©2017

Energy Efficiency Rating		
	Current	Potential
Very energy efficient - lower running costs		
(92 plus) A		
(81-91) B		
(69-80) C		
(55-68) D		
(39-54) E		
(21-38) F		
(1-20) G		
Not energy efficient - higher running costs		
England & Wales	EU Directive 2002/91/EC	



Description

Welcome to this charming ground floor apartment located in the sought-after Nym Close, Camberley. This modern and contemporary property boasts one reception room, one bedroom, and one bathroom, making it a perfect cozy retreat for individuals or couples. Situated within walking distance to Camberley Town Centre, this apartment offers convenience and accessibility to a variety of amenities, including shops, restaurants, and entertainment options.

The property features a well-presented interior, ideal for those looking for a stylish living space. With parking available for one vehicle, you can enjoy the ease of having your own designated parking spot.

Key features

- Very Modern Through Out
- One Bedroom
- Available Now
- Council Tax Band C
- EPC C
- First Floor Apartment
- Allocated Parking
- Unfurnished
- 12 Month Minimum Term



35 Plough Road
Hampshire
GU46 7UW
01276 903006

surreylettings@waterfords.co.uk
<https://www.waterfords.co.uk/>