



## 78 The Courtyard

Southwell Park Road | Camberley | Surrey | GU15 3GL

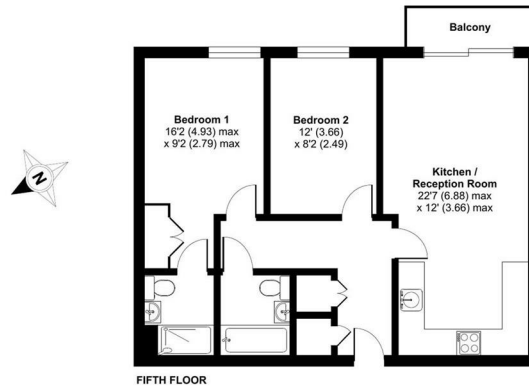
£1,450 Per Calendar Month

**Waterfords** *W*  
Residential Sales & Lettings

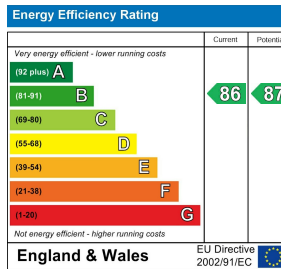


Southwell Park Road, Camberley, Surrey, GU15

Approximate Area = 674 sq ft / 62.6 sq m  
For identification only - Not to scale



Certified Property Measurement Floor plan produced in accordance with RICS Property Measurement Standards incorporating International Property Measurement Standards (IPMS2 Residential). © rinchcom 2023. Waterfords Residential Sales & Lettings



## Description

Stunning Upper Floor Two Double Bedroom Apartment w/Lift.

Features: Balcony, Residents Parking. Modern & Chic.

## Key features

- Underfloor heating
- Ensuite To Master
- New White Goods including Oven & Induction
- Entry phone system
- Available Now
- New Bathrooms
- Extensive Redecoration Works Throughout
- Allocated parking
- Council Tax Band: D
- EPC D



35 Plough Road  
Hampshire  
GU46 7UW  
01276 903006

surreylettings@waterfords.co.uk  
<https://www.waterfords.co.uk/>