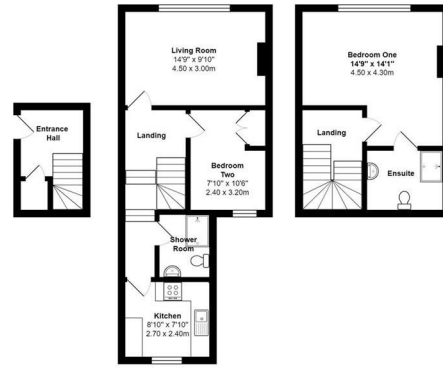




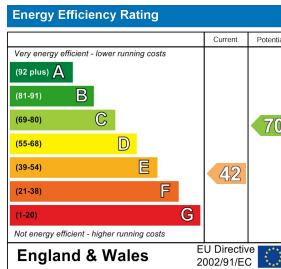
High Street | | Camberley | GU15 3RB

£1,350 (From) Per Calendar Month

Waterfords 
Residential Sales & Lettings



Total Area: 822 ft² ... 76.4 m²
 All measurements are approximate and for display purposes only



Description

Beautifully Refurbished 2-Bedroom Duplex Maisonette on Camberley High Street

This stunning two-bedroom duplex maisonette, located right on Camberley High Street, has been fully refurbished throughout to a high standard. Spread over two spacious levels, it features a brand-new kitchen and bathroom, fresh décor, and modern finishes throughout. Enjoy the convenience of shops, restaurants, and excellent transport links right on your doorstep. A stylish and comfortable home—early viewing is highly recommended.

Key features

- Spacious two-bedroom maisonette set over three levels
- Recently refurbished throughout with modern finishes
- Stylish, fully fitted kitchen
- Top-floor principal bedroom with en-suite shower room
- One allocated parking space included
- Private ground floor entrance for added privacy
- Bright living room on the first floor
- Family bathroom and first-floor bedroom
- Located directly on Camberley High Street
- Available immediately on an unfurnished basis



35 Plough Road
 Hampshire
 GU46 7UW
 01276 903006

surreylettings@waterfords.co.uk
<https://www.waterfords.co.uk/>