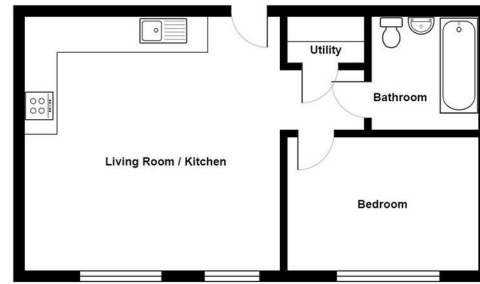




Normandy House | Alencon Link | Basingstoke | RG21 7BZ

£1,150 PCM

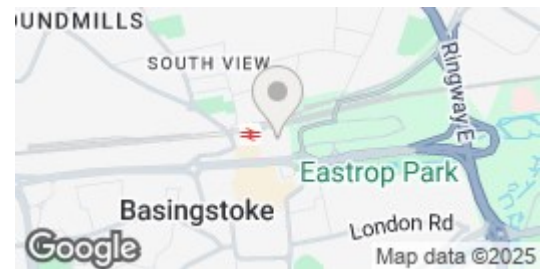
Waterfords 
Residential Sales & Lettings



Total Area: 539 ft² ... 50.0 m²



Energy Efficiency Rating		
	Current	Potential
Very energy efficient - lower running costs		
(92 plus) A		
(81-91) B		
(69-80) C		
(55-68) D		
(39-54) E		
(21-38) F		
(1-20) G		
Not energy efficient - higher running costs		
England & Wales	EU Directive 2002/91/EC	



Description

A stylish and well-presented one-bedroom apartment located in the sought-after Normandy House development in the heart of Basingstoke. This modern property features an open-plan living area with a fully fitted kitchen, a spacious double bedroom, and a contemporary bathroom. Ideally situated within walking distance of Basingstoke town centre, mainline train station, and local amenities, making it perfect for professionals or couples seeking convenient, comfortable living.

Key features

- Additional Parking For £100pm
- Secure Multi Story Car Park On Site
- LED Mirror With Shaver Socket & Demister Function
- Town Centre Location
- Minimum Term 12 Month Let
- One Bedroom & Two Bedroom Apartments
- Integrated Fridge Freezer, Dishwasher, Ceramic Hob & Electric Oven
- Rain Shower & Heated Towel Rail
- Available Now



35 Plough Road
Hampshire
GU46 7UW
01276 903006

surreylettings@waterfords.co.uk
<https://www.waterfords.co.uk/>