



Moorlands Road | | Camberley | GU15 3AF

Price Guide £400,000 Freehold





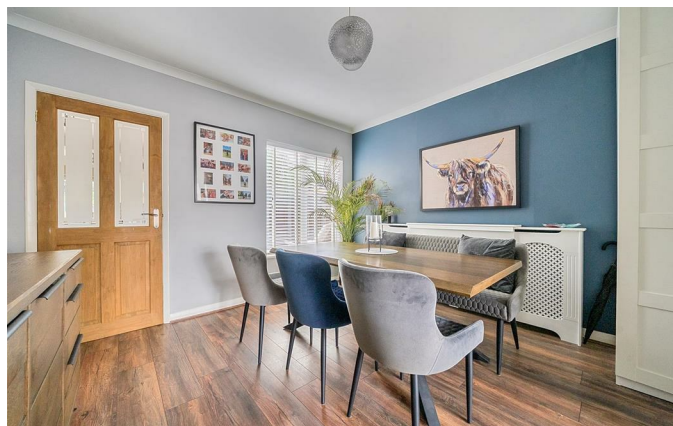
Moorlands Road |  
Camberley | GU15 3AF  
Price Guide £400,000

This attractive and well presented Edwardian home enjoys a south facing garden and benefits from two double bedrooms and an upstairs bathroom. The property is conveniently located for the A30 and within easy reach of Camberley Town Centre.

- Well appointed interiors
- Two double bedrooms
- Upstairs bathroom
- Living room
- Dining room
- Modern kitchen
- South facing garden
- Downstairs cloakroom

## Accommodation

This attractive and well presented Edwardian home is approached by a front door to the entrance hall with a stairs to the first floor, a door opens to the front aspect Living Room with a feature fireplace and an attractive square bay window. A wide archway separates the rear aspect Dining Room, and a door leads to the Kitchen, with a good range of cabinets and a range of integrated appliances, as well as access to a downstairs cloakroom. Upstairs, the two double bedrooms are served by a good sized bathroom with a modern white suite.





South facing  
garden

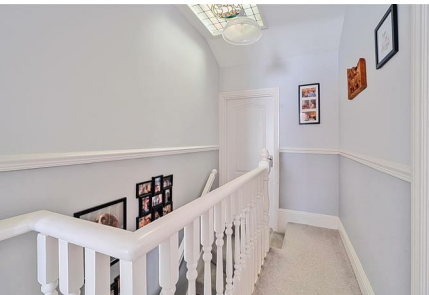


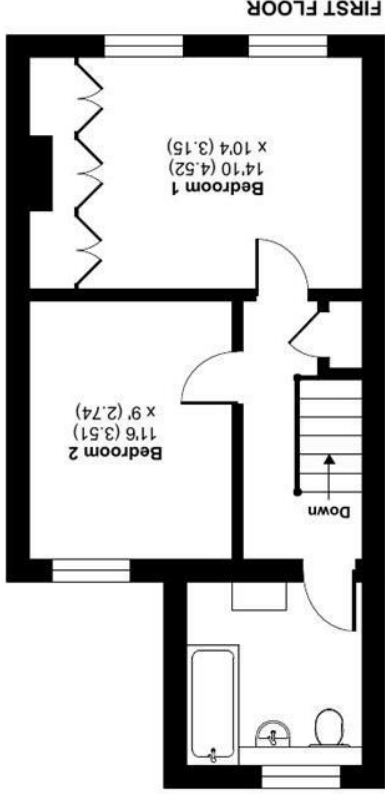
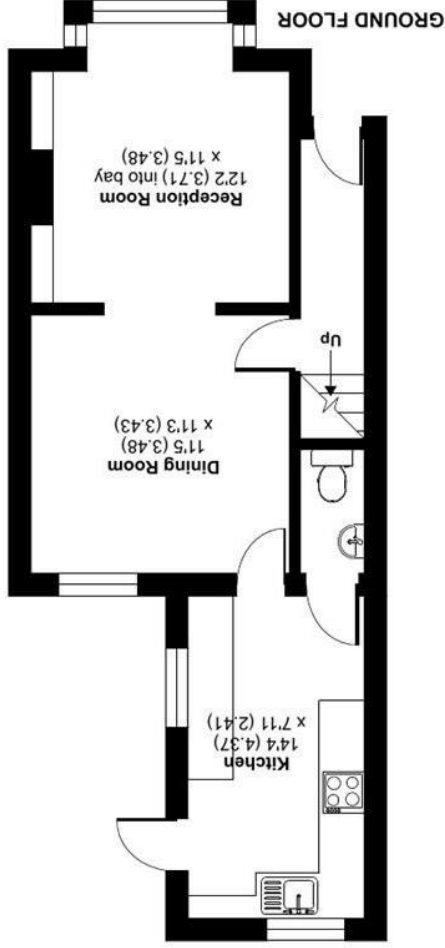
## Outside

The south facing rear garden has been recently re-landscaped by the current owners. A patio area with pergola leads to a level lawn enclosed by timber fencing and enjoying a secluded outlook, a timber shed is to the rear.

## Location

Located within easy reach of Camberley Town Centre with highly regarded schools just a short distance away as well as many popular leisure facilities such as Camberley Leisure Centre and Watchetts Park. The property is conveniently located for the A30, High Street and the Atrium with a wealth of shops and restaurants, along with Camberley Train station within walking distance. commuting via car is also easy from this property with the M3 and M4 located a short drive away.

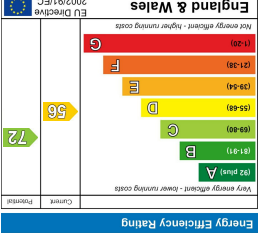




Floor plan produced in accordance with RICS Property Measurement 2nd Edition, incorporating International Property Measurement Standards (IPMS2 Residential). © mitchcom 2025.



**Moorlands Road, Camberley, GU15**  
Approximate Area = 858 sq ft / 79.7 sq m  
For identification only - Not to scale



27 High Street  
Camberley  
Surrey  
GU15 3RB  
01276 66566  
camberley@waterfords.co.uk