



Wingfield Gardens | Frimley | Camberley | GU16 9QD

Offers Over £350,000 Freehold

Waterford's W
Residential Sales & Lettings

Wingfield Gardens | Frimley
Camberley | GU16 9QD
Offers Over £350,000

A well presented two bedroom terraced house, located on the ever popular Cheylesmore Park development with an attractive garden and benefitting from a garage,

- Cheylesmore Park Development
- Neutral Living/Dining Room
- Secluded Rear Garden
- Close to Schools
- Fitted Kitchen With White Goods
- Spacious Conservatory
- Garage In Block
- Council Tax Band: D

Description

The accommodation comprises of a living/dining room, kitchen and conservatory, and upstairs are two double bedrooms served by a bathroom. The property also has UPVC double glazed windows and gas fired central heating, with a garage in a nearby block along with a pleasant south facing rear garden. There is further communal parking in front of the property. Some of the images shown are CGI's (Computer Generated



No onward chain

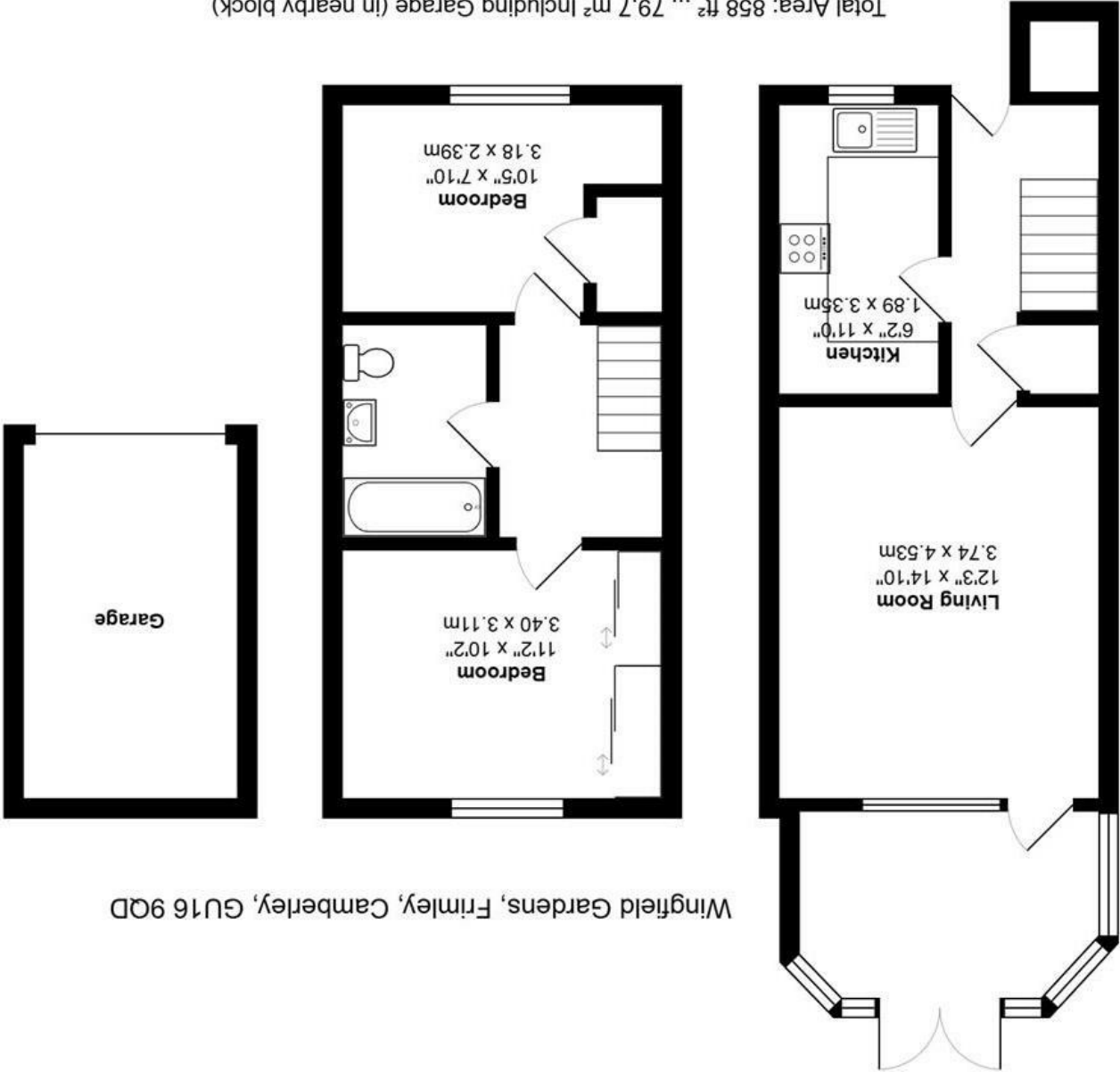


Images) as the property was previously photographed whilst unfurnished.

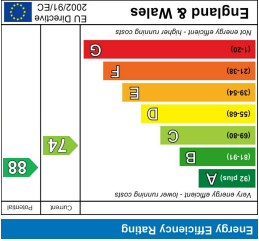
The property is within close proximity of well regarded schools such as Heather Ridge, Ravenscote and Tomlinscote, the property is also near to Pine Ridge Golf Club, parks and woodlands. Within walking distance are a range of local amenities such as a Sainsbury's, hairdressers, pub and dentist to name a few. A viewing is highly recommended.



Wingfield Gardens, Frimley, Camberley, GU16 9AD



All measurements are approximate and for display purposes only



27 High Street
Camberley
Surrey
GU15 3RB
01276 66566
ey@waterfords.co.uk