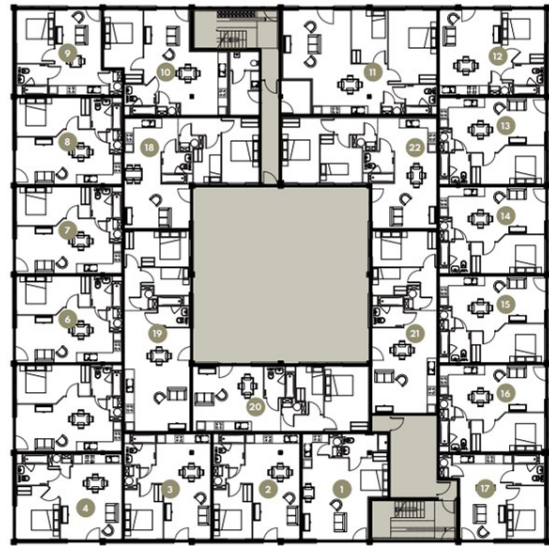




Springfield House | Ashwood Park | Ashwood Way | RG23 8DJ

£1,060 PCM

Waterfords
Residential Sales & Lettings



Energy Efficiency Rating		
	Current	Potential
Very energy efficient - lower running costs		
(92 plus) A		
(81-91) B		
(69-80) C		
(55-68) D	66	66
(39-54) E		
(21-38) F		
(1-20) G		
Not energy efficient - higher running costs		
England & Wales	EU Directive 2002/91/EC	



Description

One-Bedroom Apartment – Springfield House, Ashwood Park, Basingstoke

A well-presented one-bedroom apartment located in the sought-after Ashwood Park development. The property offers a spacious living area, modern fitted kitchen, double bedroom, and bathroom. Situated within easy reach of Basingstoke town centre and local amenities, with excellent transport links nearby. Available from October, offered unfurnished.

Key features

- One Bedroom Apartment
- Water & electric separately metered
- Intergrated fridge freezer, dishwasher, ceramic hob & electric oven
- Rain shower & heated towel rail
- Unfurnished
- Combination blinds partial or full black-out
- Lightning fast Fibre Broadband plus TV, telephone & Sky Q points.
- LED mirror with shaver socket & demister function
- Minimum 12 Month Term Let
- Available October 2025



39 The Hart Centre
Fleet
Hampshire
GU51 3LA
01252 623330

hampshirelettings@waterfords.co.uk
<https://www.waterfords.co.uk/>