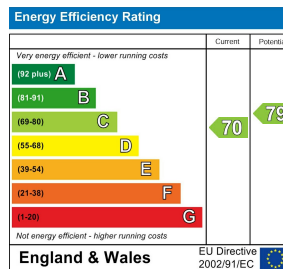
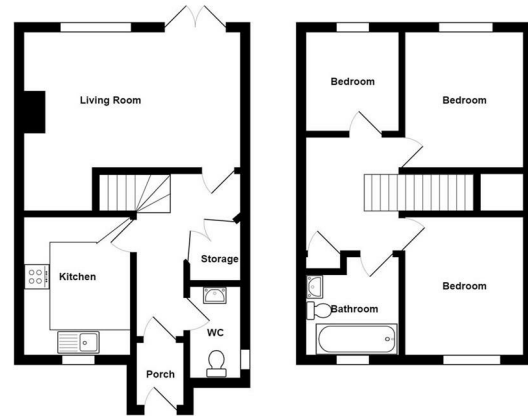




Robins Grove Crescent | Yateley | Hampshire | GU46 6PS

£1,250 PCM

Waterfords
Residential Sales & Lettings



Description

Waterfords present this family home set with in a great part of Yateley, with walking distance to local amenities, Waitrose and access to local bus stops.

The property benefits from a kitchen breakfast room, WC, separate large living room which leads on to a enclosed rear garden. To the first floor, offers three bedrooms and a family bathroom.

The property benefits from a large driveway for several cars, plus a garage with in a block.

The property is available now on a unfurnished basis.

Key features

- Three Bedrooms
- Large Lounge/Diner
- Unfurnished
- Council Tax Band C
- 12 Month Let Minimum
- Cloakroom
- Garage
- Available Immediately
- EPC C



39 The Hart Centre
Fleet
Hampshire
GU51 3LA
01252 623330
hampshirelettings@waterfords.co.uk
<https://www.waterfords.co.uk/>