



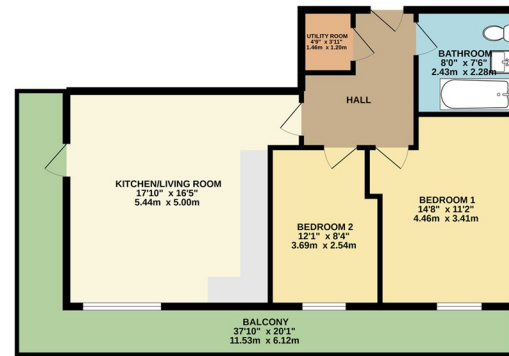
Elma House | Albert Street | Fleet | GU51 3RJ

£1,450 PCM

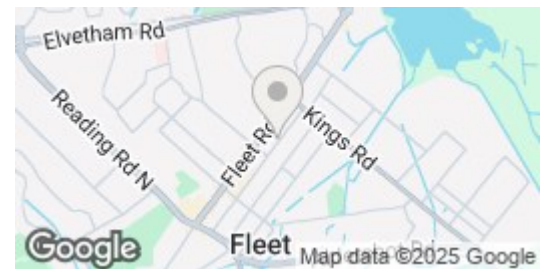
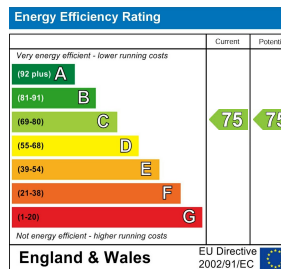
**Waterfords**  
Residential Sales & Lettings



GROUND FLOOR



Waterfords always has been made to ensure the accuracy of the floorplan contained herein. Measurements shown are approximate and do not constitute a contract. The actual measurements may vary slightly from those shown. The floorplan is for information only and does not constitute a contract. The actual measurements may vary slightly from those shown. The floorplan is for information only and does not constitute a contract.



## Description

Waterfords are proud to present this modern two bedroom balcony apartment available to rent on an unfurnished basis from September 2024, a single permit parking space will be provided with the flat.

## Key features

- BUILT IN 2022
- Second Floor Apartment
- Unfurnished
- Permit Parking
- Internal Bike Storage
- Two Bedroom
- Very Good Sized Property - Measuring 65sqm plus Balcony
- Available from September 2nd 2024
- Private Porch
- Council Tax Band to be confirmed by Council



39 The Hart Centre  
Fleet  
Hampshire  
GU51 3LA  
01252 623330  
hampshirelettings@waterfords.co.uk  
<https://www.waterfords.co.uk/>