



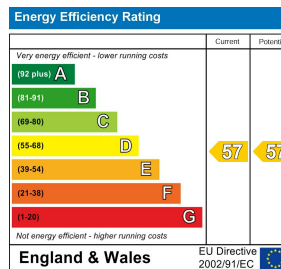
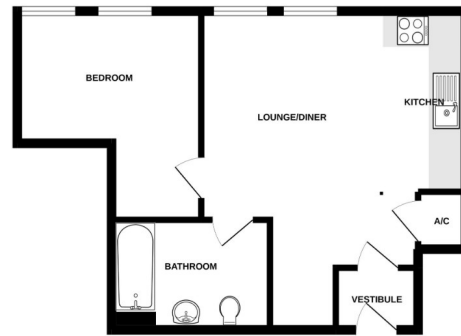
Victoria House | Albert Street | Fleet | GU51 3RJ

£1,075 PCM

Waterfords 
Residential Sales & Lettings



GROUND FLOOR



Description

Finished to a high specification and accessed via a communal entrance with entry phone system the accommodation comprises open plan kitchen living space, double bedroom and Bathroom. There is allocated parking located to the rear of the building. Available October 2025

Key features

- One Bedroom Apartment
- Modern Finish Throughout
- Allocated Parking Space
- Council Tax Band B
- Minimum Term 12 Month Let
- Ground Floor
- Open Plan Living Area
- Available 14th October
- Unfurnished



39 The Hart Centre
Fleet
Hampshire
GU51 3LA
01252 623330

hampshirelettings@waterfords.co.uk
<https://www.waterfords.co.uk/>