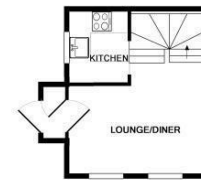




Raphael Close | | Basingstoke | RG21 3QT

£1,050

Waterfords W
Residential Sales & Lettings



GROUND FLOOR



1ST FLOOR

Whilst every attempt has been made to ensure the accuracy of the floor plan contained here, measurements of floors, windows, doors and any other items are approximate and no responsibility is taken for any error, omission, or misstatement. This plan is for illustrative purposes only and should be used as such by any prospective purchaser. The services, systems and appliances shown have not been tested and no guarantee as to their operability or efficiency can be given.
Made with Mapbox (2020)

Energy Efficiency Rating		Current	Potential
Very energy efficient - lower running costs			
(92 plus)	A		
(81-91)	B		
(69-80)	C		
(55-68)	D		
(39-54)	E		
(21-38)	F		
(1-20)	G		
Not energy efficient - higher running costs			
England & Wales		EU Directive 2002/91/EC	



Description

Welcome to Raphael Close, Basingstoke - a charming end terrace house that is sure to capture your heart! This delightful property boasts a modern finish and has been recently refurbished throughout, offering a fresh and inviting atmosphere. Available Now Unfinished

Key features

- Redecorated throughout
- Garden Space
- Council Tax Band B
- Available Now Unfurnished
- Parking
- New Flooring throughout
- One Bedroom
- EPC TBC
- 12 Month Minimum Let



39 The Hart Centre
Fleet
Hampshire
GU51 3LA
01252 623330
hampshirelettings@waterfords.co.uk
<https://www.waterfords.co.uk/>