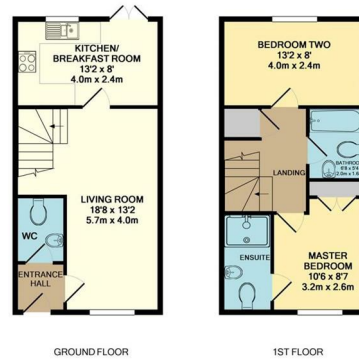




Rykmansford Road | Elvetham Heath | Fleet | GU51 1JR

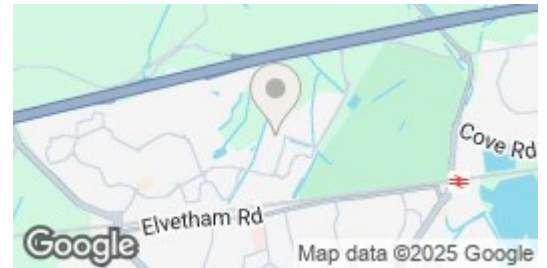
£1,475 PCM

**Waterfords**  
Residential Sales & Lettings



Whilst every attempt has been made to ensure the accuracy of the floor plan contained here, measurements of doors, windows, rooms and any other items are approximate and no responsibility is taken for any error, omission, or misstatement. This plan is for illustrative purposes only and should be used as such by any prospective purchaser. The services, systems and appliances shown have not been tested and no guarantee as to their operability or efficiency can be given.  
Made with Metropix ©2012

Energy Efficiency Rating		
	Current	Potential
Very energy efficient - lower running costs		
(92 plus) A		90
(81-91) B	77	
(69-80) C		
(55-68) D		
(39-54) E		
(21-38) F		
(1-20) G		
Not energy efficient - higher running costs		
England & Wales	EU Directive 2002/91/EC	



## Description

Waterfords are delighted to present this two bedroom terraced property, available for rent on a unfurnished basis from 10th May 2025.

## Key features

- Terraced House
- Two Bathrooms
- Allocated Parking
- Available 10th May 2025
- Council Tax -Band D
- Two Double Bedrooms
- Enclosed Rear Garden
- Unfurnished
- Minimum 12 Month Term Let
- EPC - C



39 The Hart Centre  
Fleet  
Hampshire  
GU51 3LA  
01252 623330  
hampshirelettings@waterfords.co.uk  
<https://www.waterfords.co.uk/>