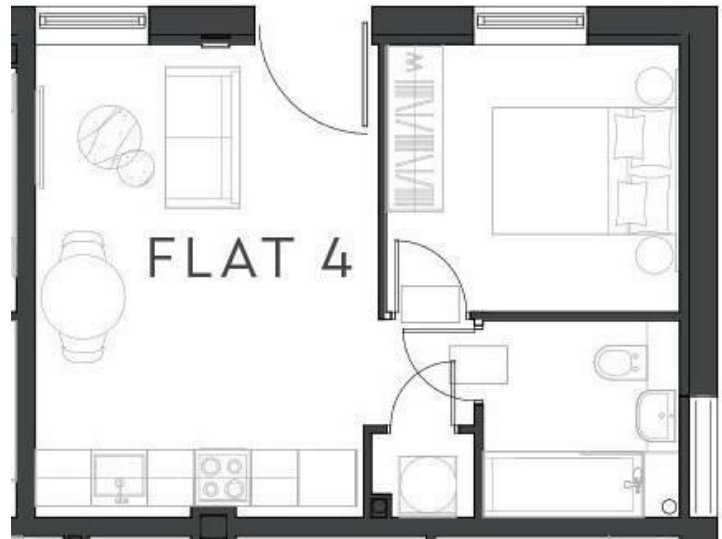




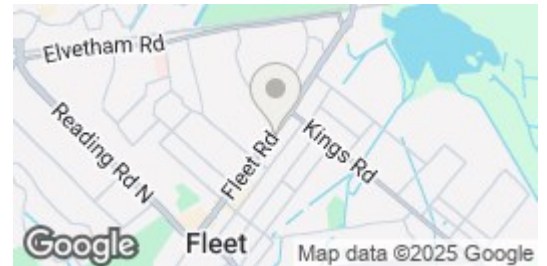
Elizabeth House Fleet Road | | Fleet | GU51 3SQ

£1,025 PCM

Waterfords 
Residential Sales & Lettings



Energy Efficiency Rating		
	Current	Potential
Very energy efficient - lower running costs		
(92 plus) A		
(81-91) B		
(69-80) C		
(55-68) D	66	66
(39-54) E		
(21-38) F		
(1-20) G		
Not energy efficient - higher running costs		
England & Wales	EU Directive 2002/91/EC	



Description

Waterfords are delighted to present this one bedroom ground floor apartment, available for rent in 11th of December on a unfurnished basis.

Key features

- One Bedroom Ground Floor Maisonette
- Heart Of Fleet Town Centre
- Available 11th December 2024
- Minimum Term 12 Month Let
- EPC D
- Unfurnished
- Allocated Parking
- Council Tax Band B



39 The Hart Centre
Fleet
Hampshire
GU51 3LA
01252 623330
hampshirelettings@waterfords.co.uk
<https://www.waterfords.co.uk/>