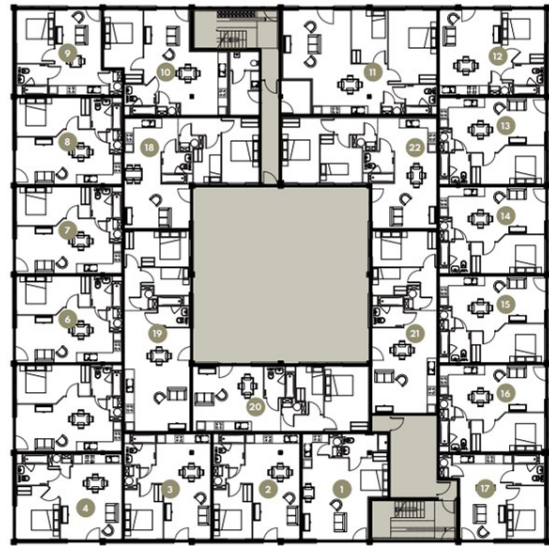




Springfield House | Ashwood Park | Ashwood Way | RG23 8BG

£995 PCM

Waterfords
Residential Sales & Lettings



Energy Efficiency Rating		
	Current	Potential
Very energy efficient - lower running costs		
(92 plus) A		
(81-91) B		
(69-80) C		
(55-68) D		
(39-54) E		
(21-38) F		
(1-20) G		
Not energy efficient - higher running costs		
England & Wales	EU Directive 2002/91/EC	



Description

Modern Studio Apartment – Springfield House, Ashwood Park, Basingstoke

A well-presented studio apartment located in the sought-after Ashwood Park development. Situated within Springfield House, this modern property offers open-plan living with a fitted kitchen, contemporary bathroom, and allocated parking. Ideal for a single professional or commuter, with excellent access to Basingstoke town centre and transport links.

Key features

- Studio Apartment to rent
- Water & electric separately metered
- Intergrated fridge freezer, dishwasher, ceramic hob & electric oven
- Rain shower & heated towel rail
- Unfurnished
- Combination blinds partial or full black-out
- Lightning fast Fibre Broadband plus TV, telephone & Sky Q points.
- LED mirror with shaver socket & demister function
- Minimum 12 Month Term Let
- Available August 2025



39 The Hart Centre
Fleet
Hampshire
GU51 3LA
01252 623330

hampshirelettings@waterfords.co.uk
<https://www.waterfords.co.uk/>