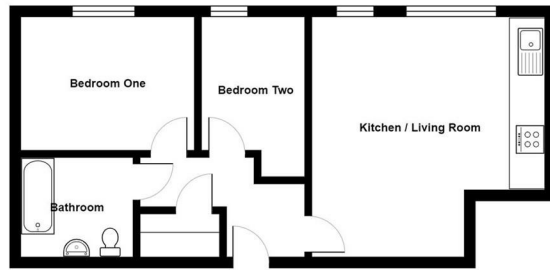




Normandy House | Alencon Link | Basingstoke | RG21 7DG

£1,325 PCM

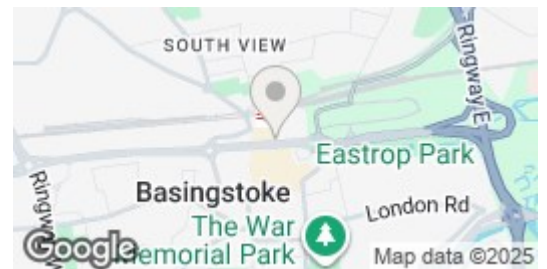
**Waterfords**  
Residential Sales & Lettings



Total Area: 560 ft² ... 52.0 m²



Energy Efficiency Rating		
	Current	Potential
Very energy efficient - lower running costs		
(92 plus) A		
(81-91) B		
(69-80) C		
(55-68) D	69	69
(39-54) E		
(21-38) F		
(1-20) G		
Not energy efficient - higher running costs		
England & Wales	EU Directive 2002/91/EC	



## Description

Waterfords are excited to present a stunning collection of contemporary, converted apartments nestled in the vibrant heart of Basingstoke. Normandy House boasts an exceptional location on the thriving Alexon Link, just a few minutes' walk from the Mainline Station, providing easy access to excellent transport links. This modern and stylish development features a selection of one and two-bedroom apartments, perfect for those seeking comfort and convenience. Available Now – don't miss the opportunity to secure your ideal home in this sought-after area.

## Key features

- Modern Apartments
- Secure Multi Story Car Park On Site
- LED Mirror With Shaver Socket & Demister Function
- Town Centre Location
- Minimum Term 12 Month Let
- One Bedroom & Two Bedroom Apartments
- Integrated Fridge Freezer, Dishwasher, Ceramic Hob & Electric Oven
- Rain Shower & Heated Towel Rail
- Available Now, Unfurnished



39 The Hart Centre  
Fleet  
Hampshire  
GU51 3LA  
01252 623330

[hampshirelettings@waterfords.co.uk](mailto:hampshirelettings@waterfords.co.uk)  
<https://www.waterfords.co.uk/>