

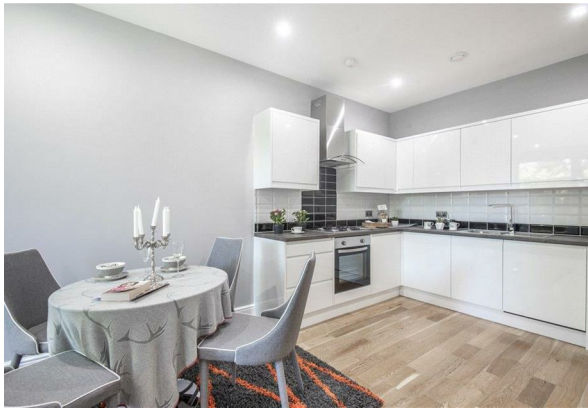


Fleet House | Barley Way | Ancells Farm | GU51 2AB

£950 PCM

**Waterfords**  
Residential Sales & Lettings





Energy Efficiency Rating		
	Current	Potential
Very energy efficient - lower running costs		
(92 plus) <b>A</b>		
(81-91) <b>B</b>		
(69-80) <b>C</b>		
(55-68) <b>D</b>		
(39-54) <b>E</b>		
(21-38) <b>F</b>		
(1-20) <b>G</b>		
Not energy efficient - higher running costs		
<b>England &amp; Wales</b>	EU Directive 2002/91/EC	



## Description

Waterfords are proud to present this modern ground floor apartment, available unfurnished from 7th May 2024. (Disclaimer; the photo's in our marketing are an array of show home photo's from when the site was first built, please call us to arrange your personal viewing today).

## Key features

- Modern Apartments
- Walking Distance to Fleet Train Station
- spacious Open Plan Living
- Minimum Term 6 Month Let
- One Bedroom
- Exceedingly High Standard
- Available 7th May 2024
- Unfurnished



39 The Hart Centre  
Fleet  
Hampshire  
GU51 3LA  
01252 623330  
hampshirelettings@waterfords.co.uk  
<https://www.waterfords.co.uk/>