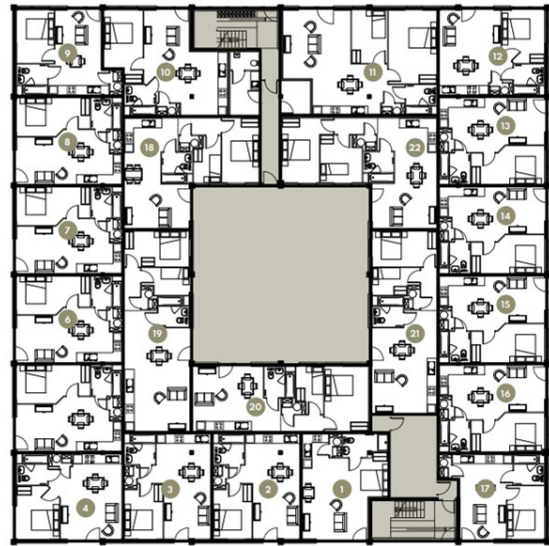




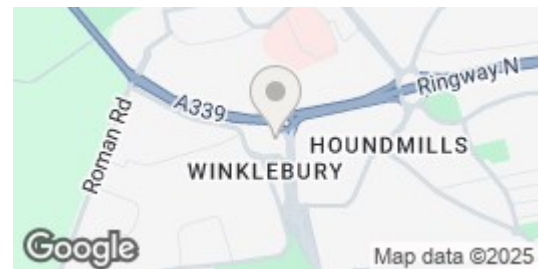
Springfield House | Ashwood Park | Ashwood Way | RG23 8DJ

£1,075 PCM

Waterfords
Residential Sales & Lettings



Energy Efficiency Rating		
	Current	Potential
Very energy efficient - lower running costs		
(92 plus) A		
(81-91) B		
(69-80) C		
(55-68) D		
(39-54) E	58	58
(21-38) F		
(1-20) G		
Not energy efficient - higher running costs		
England & Wales	EU Directive 2002/91/EC	



Description

Welcome to Springfield House in the charming town of Basingstoke! This delightful apartment boasts a modern and contemporary design, perfect for those seeking a stylish living space.

Upon entering, you are greeted by a cosy reception room, ideal for relaxing or entertaining guests. The property features one spacious bedroom, offering a peaceful retreat at the end of a long day. The bathroom is sleek and well-appointed, providing both comfort and convenience.

Located in a convenient area, Springfield House offers parking space for two vehicles, ensuring you never have to worry about finding a spot. With the apartment becoming available September 2025, you have the opportunity to make this lovely space your own in the near future.

Key features

- One Bedroom Apartment
- Water & electric separately metered
- Intergrated fridge freezer, dishwasher, ceramic hob & electric oven
- Rain shower & heated towel rail
- Smart Parcel drop box facility & On-site manager 's office.
- Combination blinds partial or full black-out
- Lightning fast Fibre Broadband plus TV, telephone & Sky Q points.
- LED mirror with shaver socket & demister function
- Onsite parking included in the rent
- Available September 2025



39 The Hart Centre
Fleet
Hampshire
GU51 3LA
01252 623330
hampshirelettings@waterfords.co.uk
<https://www.waterfords.co.uk/>