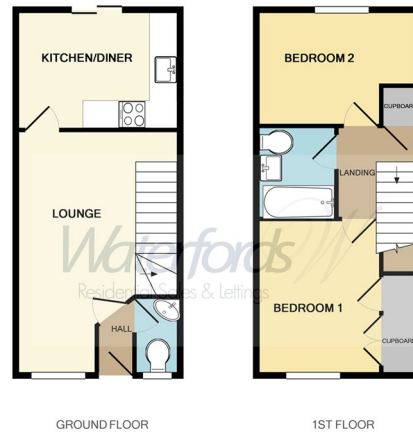
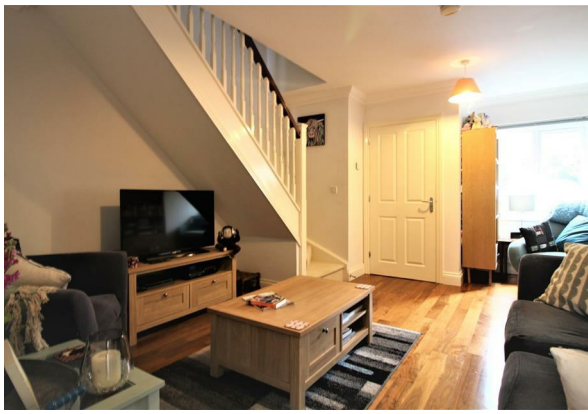




East Hundreds | Elvetham Heath | Fleet | GU51 1HN

£1,500 PCM

Waterfords W
Residential Sales & Lettings



Whilst every attempt has been made to ensure the accuracy of the floor plan contained here, measurements of doors, windows, rooms and any other items are approximate and no responsibility is taken for any error, omission, or mis-statement. This plan is for illustrative purposes only and should be used as such by any prospective purchaser. The services, systems and appliances shown have not been tested and no guarantee as to their operability or efficiency can be given.
Made with Metropix ©2013

Energy Efficiency Rating		
	Current	Potential
Very energy efficient - lower running costs		
(92 plus) A		
(81-91) B		
(69-80) C		
(55-68) D		
(39-54) E		
(21-38) F		
(1-20) G		
Not energy efficient - higher running costs		
England & Wales	EU Directive 2002/91/EC	



Description

Waterfords are proud to present this modern home Located in the sought-after East Hundreds area, this well-presented two-bedroom house offers comfortable and modern living in a quiet residential setting. The property features a spacious lounge, a modern fitted kitchen, two good-sized bedrooms, and a contemporary bathroom. Additional benefits include a private garden, allocated parking, and close proximity to local schools, shops, and Fleet mainline station. Ideal for professionals or small families.

Key features

- Two Double Bedrooms
- Gas Central Heating
- Walking Distance To Train Station
- Minimum Term 6 Month Let
- EPC C
- Elvetham Heath Development
- Modern Throughout
- Available August 2025
- Council Tax Band D
- Minimum Rent 12 Months



39 The Hart Centre
Fleet
Hampshire
GU51 3LA
01252 623330
hampshirelettings@waterfords.co.uk
<https://www.waterfords.co.uk/>