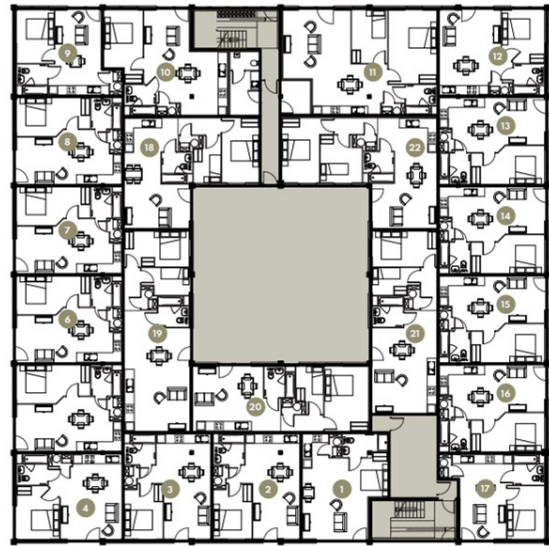




Springfield House | Ashwood Park | Ashwood Way | RG23 8BG

£1,050 PCM

Waterfords W
Residential Sales & Lettings



| Energy Efficiency Rating | | Current | Potential |
|---|---|-------------------------|-----------|
| Very energy efficient - lower running costs | | | |
| (92 plus) | A | | |
| (81-91) | B | | |
| (69-80) | C | | |
| (55-68) | D | 66 | 66 |
| (39-54) | E | | |
| (21-38) | F | | |
| (1-20) | G | | |
| Not energy efficient - higher running costs | | | |
| England & Wales | | EU Directive 2002/91/EC | |



Description

Waterford's are proud to present this modern one bedroom apartment available to rent on an unfurnished basis from June 2026.

Key features

- One Bedroom Apartment to rent
- Water & electric separately metered
- Intergrated fridge freezer, dishwasher, ceramic hob & electric oven
- Rain shower & heated towel rail
- Smart Parcel drop box facility & On-site manager 's office.
- Combination blinds partial or full black-out
- Lightning fast Fibre Broadband plus TV, telephone & Sky Q points.
- LED mirror with shaver socket & demister function
- Onsite parking included in the rent
- Modern Build - Available June



39 The Hart Centre
 Fleet
 Hampshire
 GU51 3LA
 01252 623330
hampshirelettings@waterfords.co.uk
<https://www.waterfords.co.uk/>