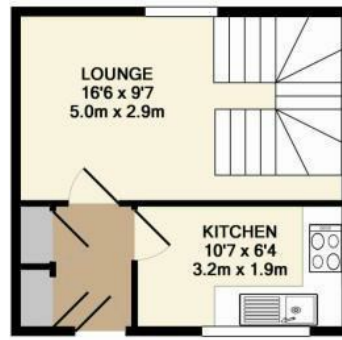




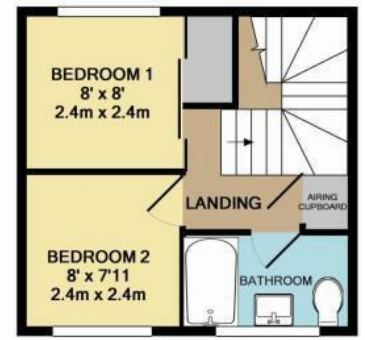
Morley Close | Yateley | Hampshire | GU46 7TY

£1,500 PCM

Waterford's W
Residential Sales & Lettings



GROUND FLOOR



1ST FLOOR

Whilst every attempt has been made to ensure the accuracy of the floor plan contained here, measurements of doors, windows, rooms and any other items are approximate and no responsibility is taken for any error, omission, or mis-statement. This plan is for illustrative purposes only and should be used as such by any prospective purchaser. The services, systems and appliances shown have not been tested and no guarantee as to their operability or efficiency can be given.
Made with Metropix ©2012



Energy Efficiency Rating		
	Current	Potential
Very energy efficient - lower running costs		
(92 plus) A		87
(81-91) B		
(69-80) C	69	
(55-68) D		
(39-54) E		
(21-38) F		
(1-20) G		
Not energy efficient - higher running costs		
England & Wales	EU Directive 2002/91/EC	



Description

Waterfords are proud to present this newly refurbished two bedroom semidetached house, Available 3rd June 2024 (Photo's coming soon)

Key features

- Quiet Cul De Sac Location
- Rear Garden
- Unfurnished
- Shall be refurbisihed before next tenancy
- EPC - C
- Two Double Bedrooms
- Allocated Parking
- Available Mid March 2024
- Council Tax - C
- Minimum 6 Month Tenancy



39 The Hart Centre
Fleet
Hampshire
GU51 3LA
01252 623330
hampshirelettings@waterfords.co.uk
<https://www.waterfords.co.uk/>