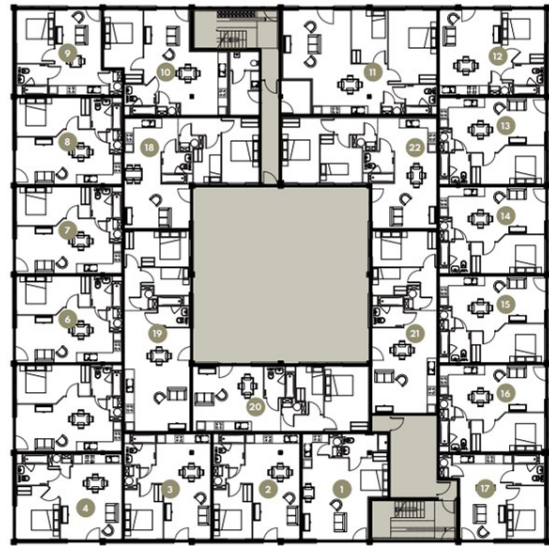




Springfield House | Ashwood Park | Ashwood Way | RG23 8BG

£1,500 PCM

**Waterfords**  
Residential Sales & Lettings



Energy Efficiency Rating		
	Current	Potential
Very energy efficient - lower running costs		
(92 plus) A		
(81-91) B		
(69-80) C		
(55-68) D	66	66
(39-54) E		
(21-38) F		
(1-20) G		
Not energy efficient - higher running costs		
England & Wales	EU Directive 2002/91/EC	



## Description

Modern two-bedroom apartment in the sought-after Springfield House, Ashwood Park, available October 2025. Featuring a spacious open-plan living area, contemporary kitchen, and stylish bathroom, this home offers comfort and convenience. Located close to local amenities, transport links, and green spaces, it's ideal for professionals or small families.

## Key features

- Two Bedroom Apartment to rent
- Water & electric separately metered
- Intergrated fridge freezer, dishwasher, ceramic hob & electric oven
- Rain shower & heated towel rail
- Minimum Term 12 Month Let
- Combination blinds partial or full black-out
- Lightning fast Fibre Broadband plus TV, telephone & Sky Q points.
- LED mirror with shaver socket & demister function
- Onsite parking included in the rent
- Available October



39 The Hart Centre  
Fleet  
Hampshire  
GU51 3LA  
01252 623330  
hampshirelettings@waterfords.co.uk  
<https://www.waterfords.co.uk/>