



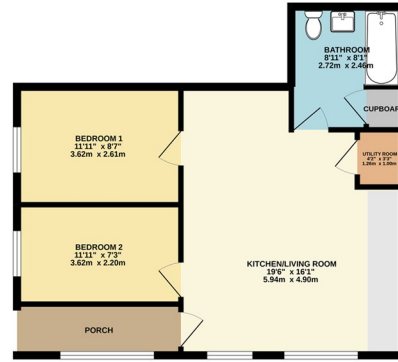
Elma House | Albert Street | Fleet | GU51 3RJ

£1,500 PCM

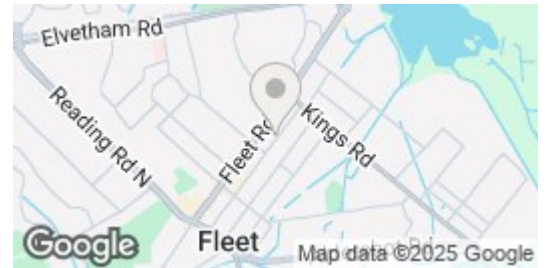
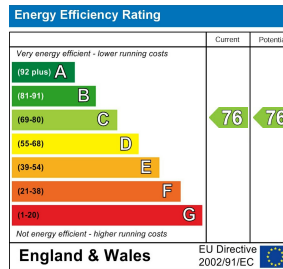
*Waterfords* *W*  
Residential Sales & Lettings



GROUND FLOOR



Waterfords are pleased to have made an effort to ensure the accuracy of the floor plan information. However, we do not accept any liability for errors or omissions. The floor plan is provided for information only and should not be used as a basis for any decision. The floor plan is not a legal document and should not be used as a basis for any decision. The floor plan is not a legal document and should not be used as a basis for any decision.



## Description

Waterfords are delighted to present this exquisite two-bedroom maisonette, available for rent on an unfurnished basis from 26th August 2025. This charming property offers spacious living areas and a welcoming atmosphere, perfect for those seeking a comfortable home. Additionally, one parking permit will be provided for your convenience. Don't miss out on this fantastic opportunity to make this maisonette your new home!

## Key features

- Modern Building
- Ground Floor Maisonette
- Unfurnished
- Permit Parking
- Minimum 12 Month Let
- Two Bedroom
- Very Good Sized Property - Measuring 64sqm plus private porch
- Available from 26th August 2025
- Private Porch



39 The Hart Centre  
Fleet  
Hampshire  
GU51 3LA  
01252 623330

[hampshirelettings@waterfords.co.uk](mailto:hampshirelettings@waterfords.co.uk)  
<https://www.waterfords.co.uk/>