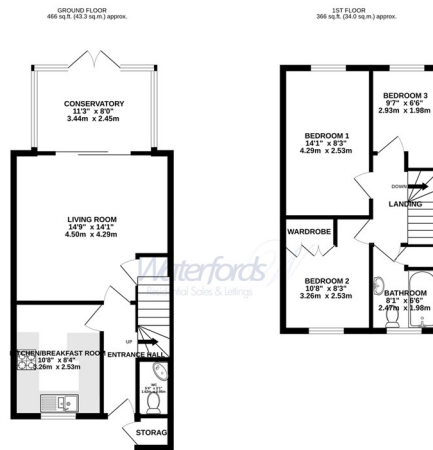




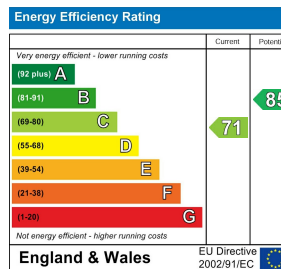
Barn Field | Yateley | Hampshire | GU46 6HZ

£1,600 PCM

**Waterfords**  
Residential Sales & Lettings



TOTAL FLOOR AREA: 832 sq.ft. (77.3 sq.m.) approx.  
 Waterfords are pleased to present this property for sale on a 'no chain' basis. The property is offered as a guide only. The actual condition of the property should be verified by a professional surveyor. The property is offered on an 'as is' basis. The seller is not responsible for any inaccuracies in the information provided. The property is offered on a 'no chain' basis. The seller is not responsible for any inaccuracies in the information provided. The property is offered on a 'no chain' basis. The seller is not responsible for any inaccuracies in the information provided.



## Description

Waterfords are delighted to present this three bedroom end of terrace property, available for rent on a unfurnished basis from 24th July 2024.

## Key features

- Three Bedroom House
- End Of Terrace
- Allocated Parking
- Available Now
- Minimum Term 12 Month Let
- Unfurnished
- Council Tax Band D
- EPC Rating B



39 The Hart Centre  
 Fleet  
 Hampshire  
 GU51 3LA  
 01252 623330  
[hampshirelettings@waterfords.co.uk](mailto:hampshirelettings@waterfords.co.uk)  
<https://www.waterfords.co.uk/>