



iwstates.com



Swallowtail Court, Birdwing Walk

Stevenage, SG1 4FZ

Guide Price £240,000



2



2



1



D

Council Tax: C



Set on the GROUND FLOOR of this modern well maintained building is this two double bedroom, two bathroom apartment. Located in the Chrysalis Park area of Stevenage, internal accommodation comprises open plan kitchen/lounge, three piece bathroom, two bedrooms and ample storage throughout. Private allocated parking space.



Communal Areas

Entrance Hallway

Kitchen/Lounge Area

16'8" x 16'1" (5.08m x 4.90m)

Bedroom One

15'7" x 8'6" (4.75m x 2.59m)

En-Suite

Bedroom Two

9'8" x 9'2" (2.95m x 2.79m)

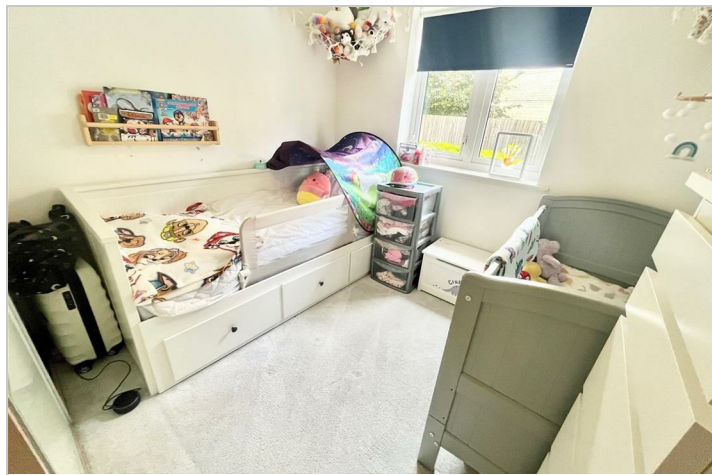
Bathroom

Allocated Parking Space

Lease Details

Lease length: 155yrs from 1st Jan 2010
Service Charges: £1,572.72 1st Jul 2025 to 30th Jun 2026
Ground Rent: £600

- Spacious
- Ground Floor
- En-Suite to Bedroom One
- Allocated Parking
- Ideal first time purchase
- Good length lease remaining
- Well cared for throughout



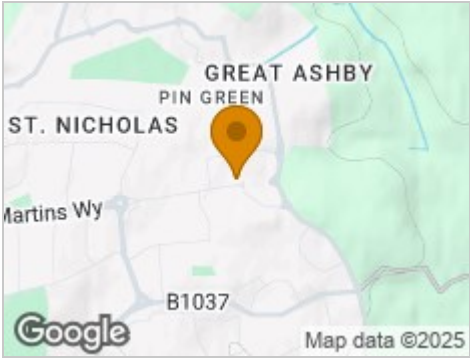
Road Map



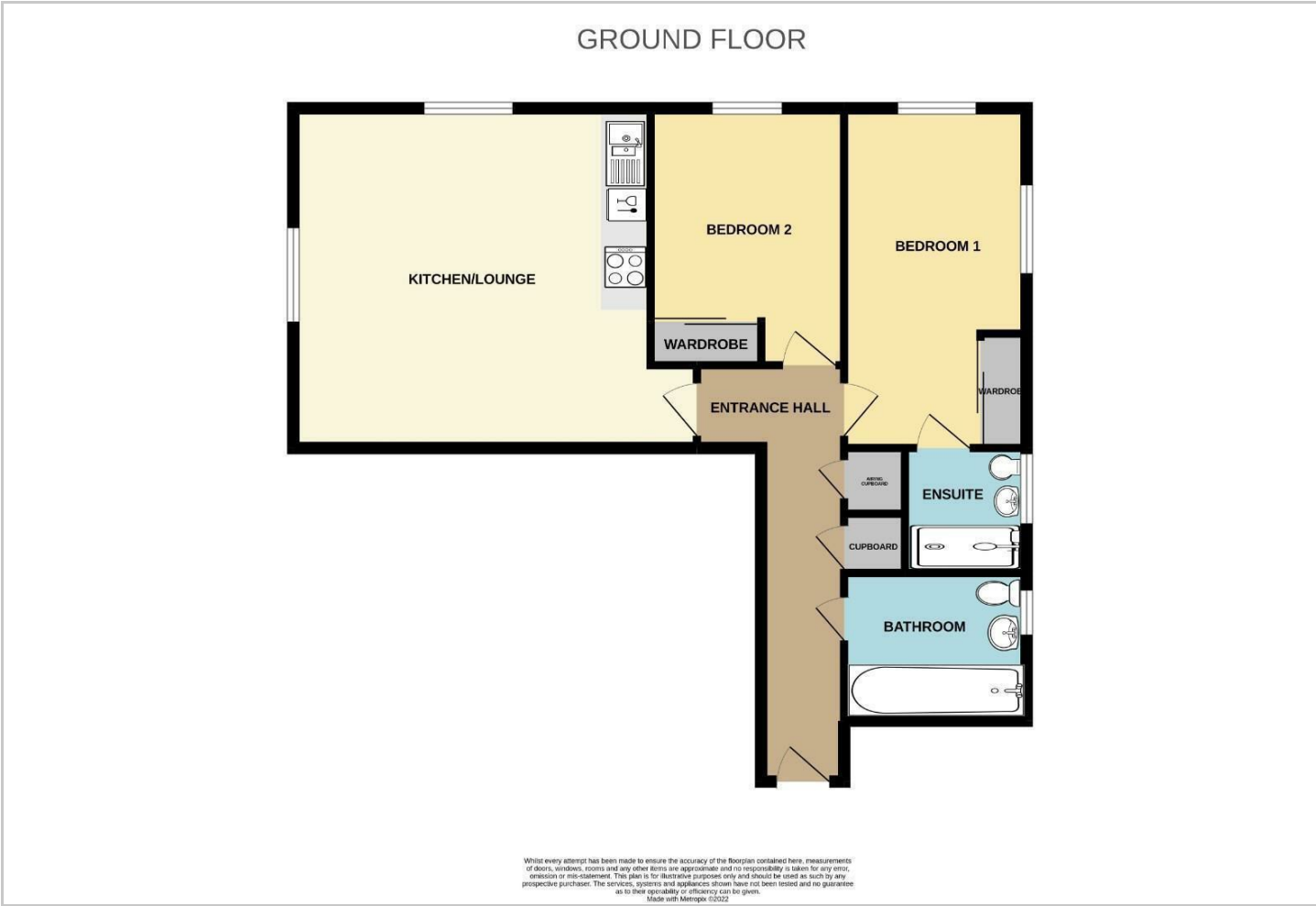
Hybrid Map



Terrain Map



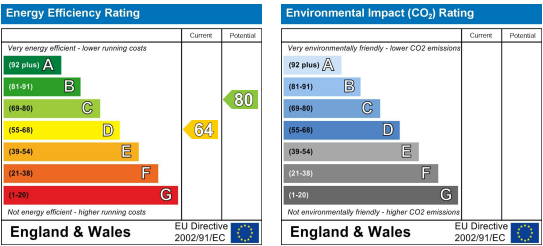
Floor Plan



Viewing

Please contact our Stevenage Sales Office on 01438 313 393 if you wish to arrange a viewing appointment for this property or require further information.

Energy Efficiency Graph



These particulars are intended to give a fair and reliable description of the property but no responsibility for any inaccuracy or error can be accepted and do not constitute an offer or contract. We have not tested any services or appliances (including central heating if fitted) referred to in these particulars and the purchasers are advised to satisfy themselves as to the working order and condition. If a property is unoccupied at any time there may be reconnection charges for any switched off/disconnected or drained services or appliances - All measurements are approximate. **THINKING OF SELLING?** If you are thinking of selling your home or just curious to discover the value of your property, Hunters would be pleased to provide free, no obligation sales and marketing advice. Even if your home is outside the area covered by our local offices we can arrange a Market Appraisal through our national network of Hunters estate agents.