



iwestates.com

25 Sparrow Drive, Stevenage, SG2 9FB



## 25 Sparrow Drive, Stevenage, SG2 9FB

Guide Price £699,995

Located in the modern cul-de-sac of Sparrow Drive, Stevenage, this impressive detached house offers a remarkable blend of space and contemporary living. Significantly improved and extended over three floors, the property boasts an expansive layout that is perfect for families or those who enjoy entertaining.

With six bedrooms, there is ample room for everyone, ensuring comfort and privacy. The three well-appointed bathrooms provide convenience for busy mornings and family life. The property offers versatile spaces that can be tailored to your needs, whether it be a formal dining area, a cosy lounge, or a playroom for the children.

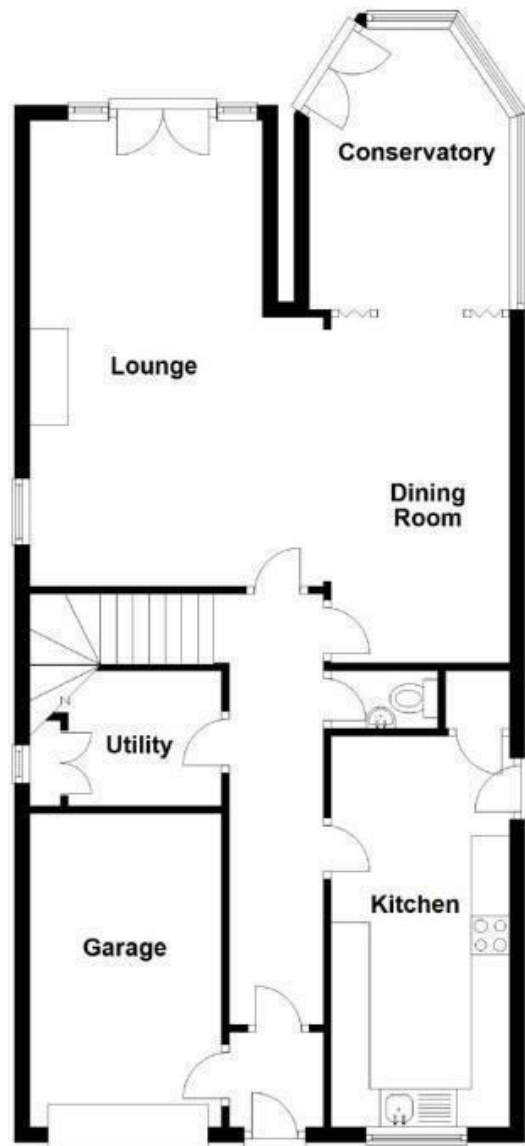
This family home also features a delightful garden room, ideal for those who work from home or require a quiet space for study.

Outside, you will find parking for up to three vehicles, a valuable asset in today's busy world.

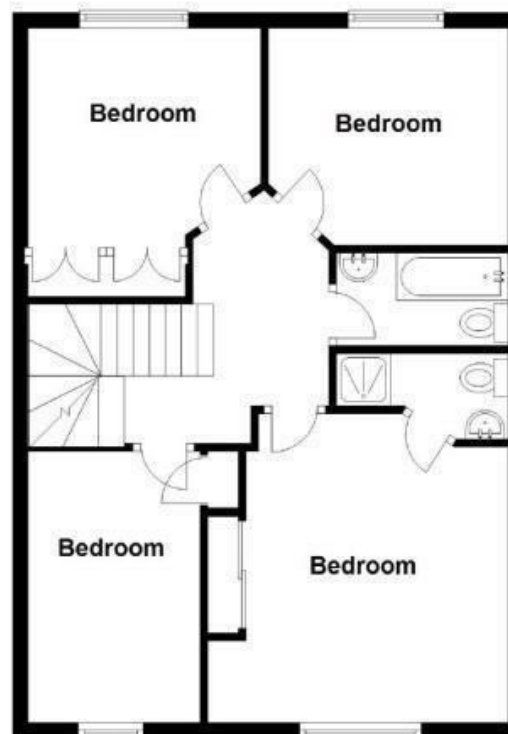
If you are seeking a spacious family home in a desirable location, this property on Sparrow Drive is not to be missed. Come and experience the charm and functionality of this exceptional residence for yourself.

Stevenage Sales 53 High Street, Stevenage, Hertfordshire SG1 3AQ | 01438 313 393  
stevenage@iwestates.com | www.hunters.com

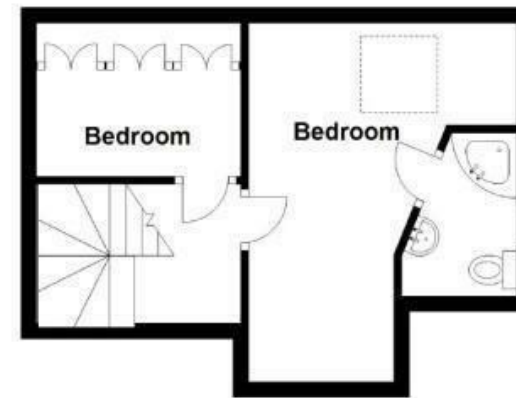
Ground Floor



First Floor



Second Floor



Energy Efficiency Rating		
	Current	Potential
Very energy efficient - lower running costs		
(92 plus) <b>A</b>		
(81-91) <b>B</b>		
(69-80) <b>C</b>		
(55-68) <b>D</b>		
(39-54) <b>E</b>		
(21-38) <b>F</b>		
(1-20) <b>G</b>		
Not energy efficient - higher running costs		
England & Wales	EU Directive 2002/91/EC	

Environmental Impact (CO <sub>2</sub> ) Rating		
	Current	Potential
Very environmentally friendly - lower CO <sub>2</sub> emissions		
(92 plus) <b>A</b>		
(81-91) <b>B</b>		
(69-80) <b>C</b>		
(55-68) <b>D</b>		
(39-54) <b>E</b>		
(21-38) <b>F</b>		
(1-20) <b>G</b>		
Not environmentally friendly - higher CO <sub>2</sub> emissions		
England & Wales	EU Directive 2002/91/EC	





