



AVAILABLE
15TH SEPTEMBER



FLAT

Turpin House
Strasburg Road
Battersea Park
SW11 5HS

£808 Per Week

Turpin House, Strasburg Road SW11

Split Level

Four Double Bedrooms

Two Bathrooms

Open Plan Kitchen And Reception Room

Includes Hot Water & Heating

Close to Battersea Park and Queenstown Road
Stations.

Perfect For Professional Sharers

Available Furnished

Available 15th Sept 2025



absolute living

4 BED FLAT LOCATED IN BATTERSEA PARK

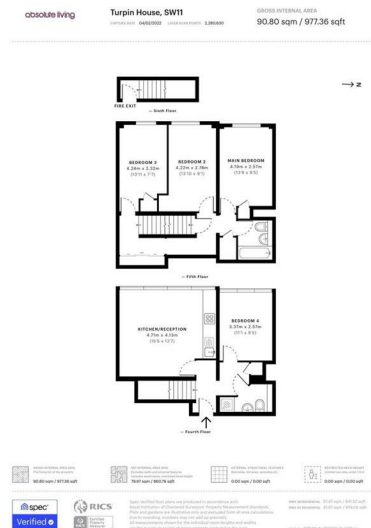
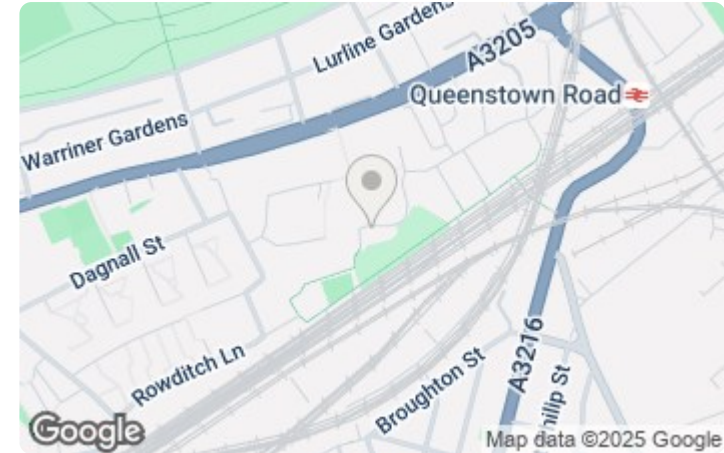
Turpin House SW11. Absolute Living are delighted to offer this spacious split level four double bedroomed flat with two bathrooms moments from Battersea Park and Queenstown Road stations. Hot Water & Heating included. Available 15th Sept 2025. On a furnished basis.

Call us on
020 3002 9002
hello@absoluteliving.co.uk



Full Description

The flat is presented in excellent condition throughout with two fitted bathrooms and a good size kitchen complete with white goods. The bedrooms are all big doubles of equal size - three upstairs with a bathroom and one downstairs with a shower room. Moments from Battersea Park there is also a Tesco Metro about 100 metres away. Perfect flat for professional sharers. Available on the market on a furnished basis early viewings are highly recommended.



Energy Efficiency Rating		Environmental Impact (CO ₂) Rating			
	Current	Potential		Current	Potential
Very energy efficient - lower running costs			Very environmentally friendly - lower CO ₂ emissions		
(92 plus) A			(92 plus) A		
(81-91) B			(81-91) B		
(69-80) C			(69-80) C		
(55-68) D			(55-68) D		
(39-54) E			(39-54) E		
(21-38) F			(21-38) F		
(1-20) G			(1-20) G		
Not energy efficient - higher running costs			Not environmentally friendly - higher CO ₂ emissions		
England & Wales	EU Directive 2002/91/EC		England & Wales	EU Directive 2002/91/EC	

absolute living