



## 26 BRIGHTON STREET

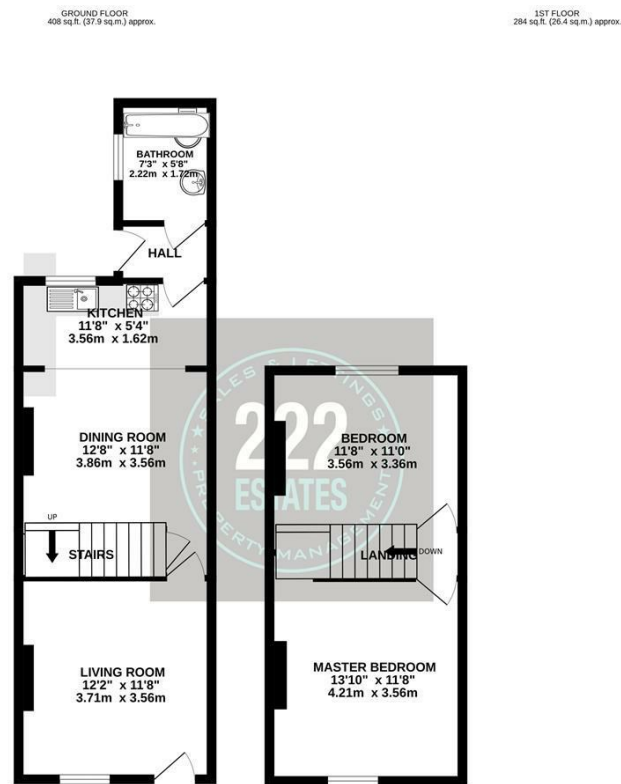
WA5 1QE

**£117,500**  
**LEASEHOLD**

Two bedroom mid terraced property offered with no onward chain on Brighton Street opposite the hospital. The property would make an ideal first time buy or a great investment opportunity. It has just undergone a refurbishment with a brand new bathroom and has new carpets and freshly decorated. The home itself provides lounge to the front, open plan lounge/diner and kitchen to the rear leading onto downstairs bathroom. To the first floor there are two double bedrooms. Absolutely excellent location. Please give 222 Estates a call to book your viewing.

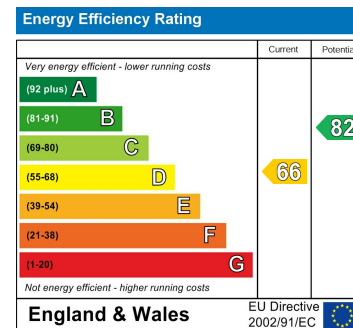






TOTAL FLOOR AREA: 692 sq.ft. (64.3 sq.m.) approx.

Whilst every attempt has been made to ensure the accuracy of the floorplan contained herein, measurements of doors, windows, rooms and any other items are approximate and no responsibility is taken for any error, omission or mis-statement. This plan is for illustrative purposes only and should be used as such by any prospective purchaser. The services, systems and appliances shown have not been tested and no guarantee as to their operability or efficiency can be given.  
Made with Metapix (2024)



Agents Note: Whilst every care has been taken to prepare these particulars, they are for guidance purposes only. All measurements are approximate and are for general guidance purposes only and whilst every care has been taken to ensure their accuracy, they should not be relied upon and potential buyers/tenants are advised to recheck the measurements

222 Estates Sales and Lettings  
222 Orford Lane Orford  
Warrington  
Cheshire  
WA2 7BB

01925 499599  
info@222estates.co.uk  
www.222estates.co.uk

