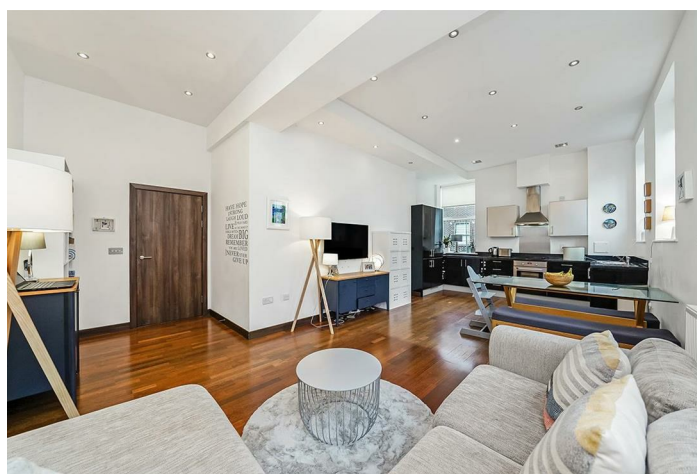
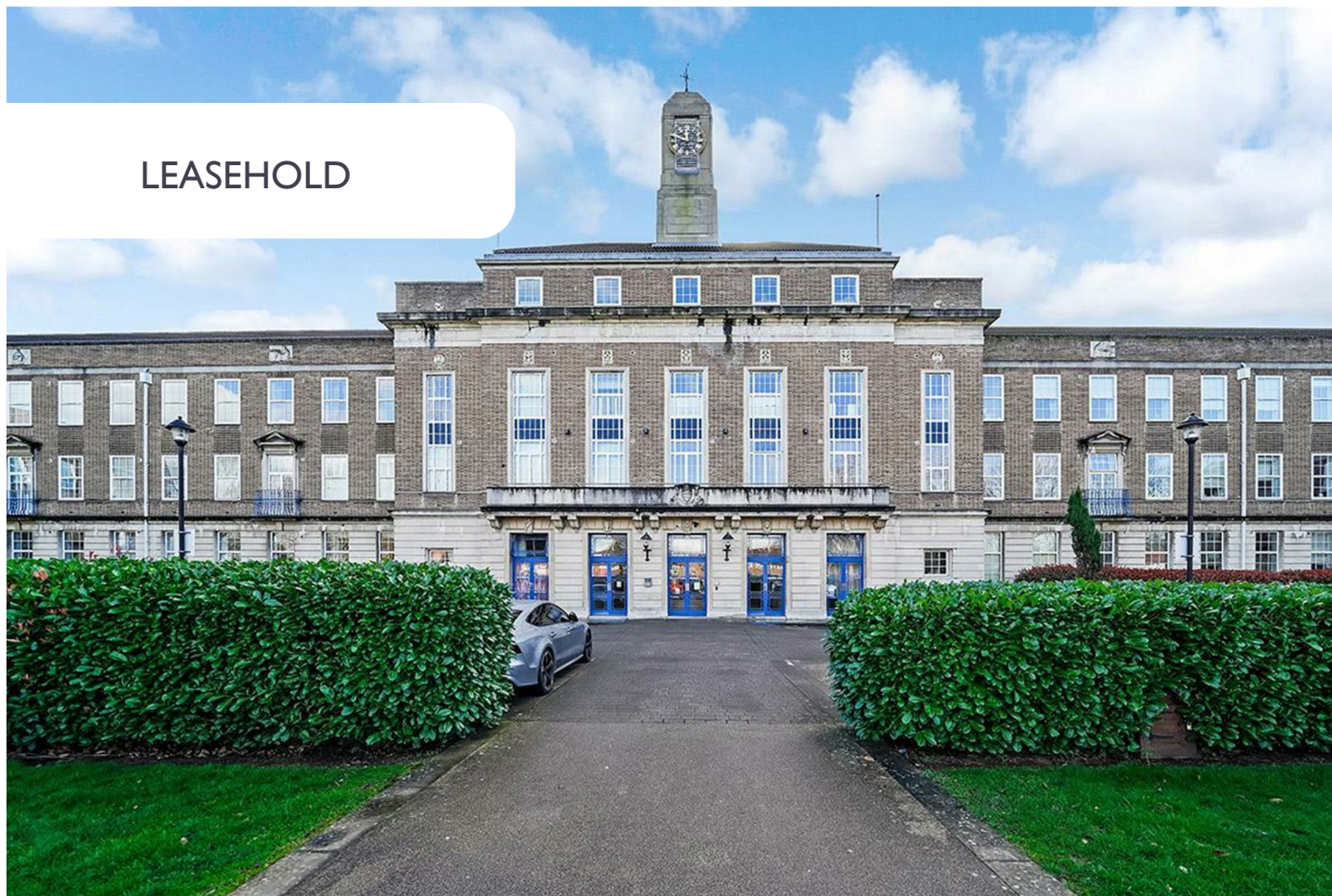


LEASEHOLD



Apartment (EPC Rating: C)

**FLAT 215, 566, ACADEMY COURT  
LONGBRIDGE ROAD, DAGENHAM, RM8 2AR**

**£325,000**

**Green Lane Residential**

*Your personal estate agents with over 50 years experience*

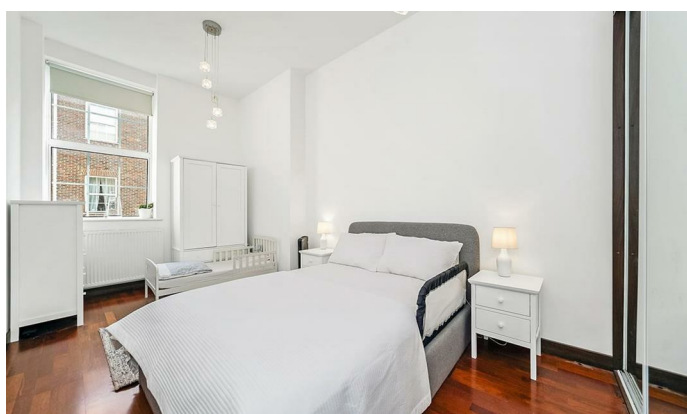
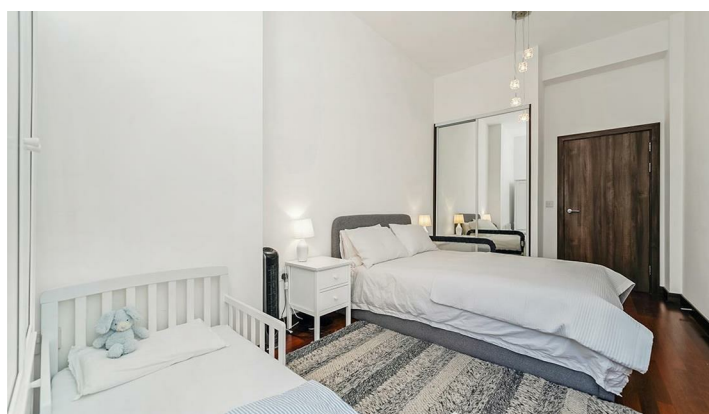
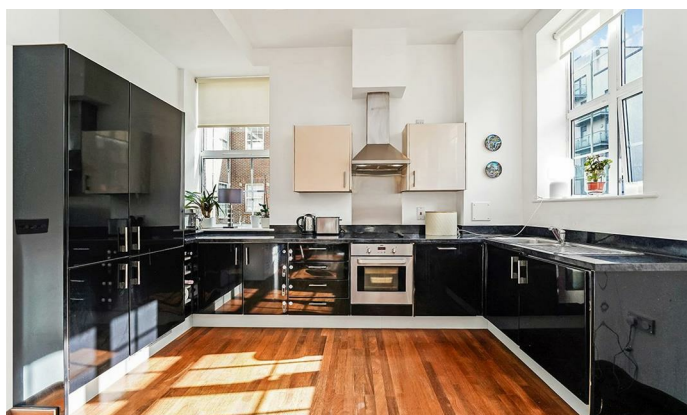


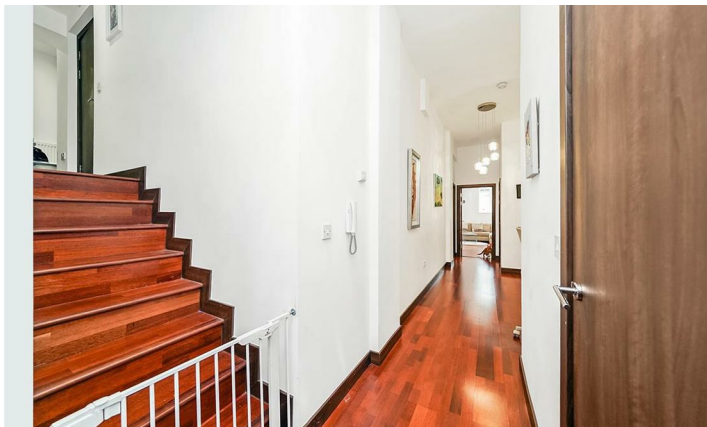
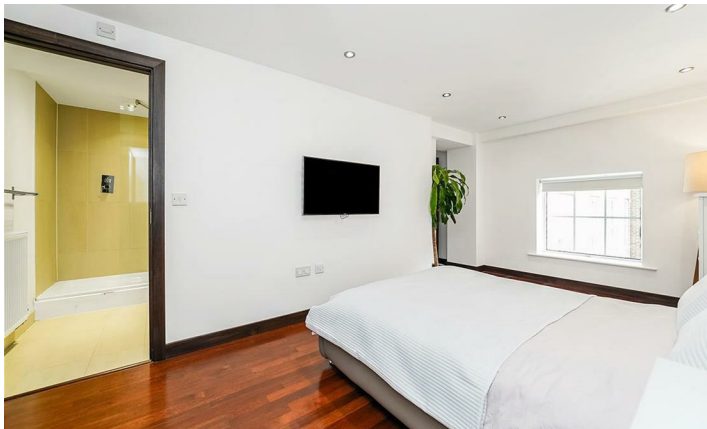


# 2 Bedroom Apartment located in Dagenham

Green Lane Residential is pleased to present this spacious two-bedroom apartment, located in the highly sought-after Academy Court development. Offering 1090 SqFt (101 SqMtrs) of living space and arranged over two floors, this apartment exemplifies modern living. It includes allocated parking, two double bedrooms, two bathrooms, a generous entrance hall, and an impressive dual-aspect living/kitchen/dining area, which is bathed in natural light from the Georgian-style double-glazed windows. With high ceilings, well-proportioned rooms, large windows, and a neutral decor, this property creates a welcoming atmosphere.

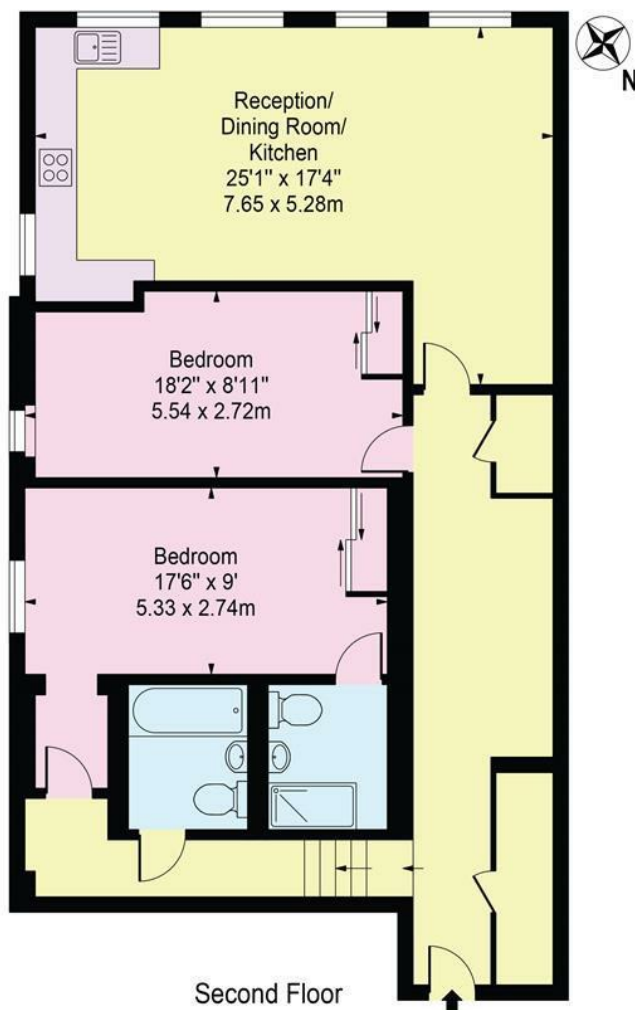
This apartment is a must-see for those seeking a modern, spacious home with an abundance of historic charm!





# Academy Court, Lodgbridge Road, RM8

Approx. Gross Internal Area 1090 Sq Ft - 101.26 Sq M



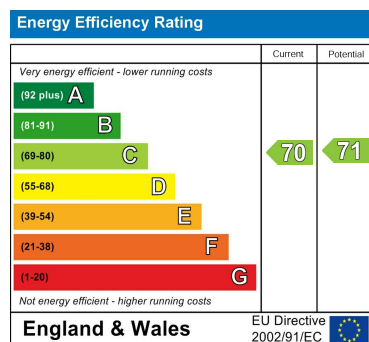
For Illustration Purposes Only - Not To Scale

This floor plan should be used as a general outline for guidance only and does not constitute in whole or in part an offer or contract. Any intending purchaser or lessee should satisfy themselves by inspection, searches, enquiries and full survey as to the correctness of each statement. Any areas, measurements or distances quoted are approximate and should not be used to value a property or be the basis of any sale or let.

Council Tax Band

**D**

Energy Performance Graph



Call us on

**02081293838**

[admin@greenlaneresidential.co.uk](mailto:admin@greenlaneresidential.co.uk)

[greenlaneresidential.co.uk](http://greenlaneresidential.co.uk)

Agents Note: Whilst every care has been taken to prepare these particulars, they are for guidance purposes only. All measurements are approximate and are for general guidance purposes only and whilst every care has been taken to ensure their accuracy, they should not be relied upon and potential buyers are advised to recheck the measurements.

## Green Lane Residential

*Your personal estate agents with over 50 years experience*